



AN ISO 9001:2015 CERTIFIED COMPANY

Cost Effective & **Quality**  
Metal Solutions

**Products**  
☆ **Brochure**

[www.indianmetal.solutions](http://www.indianmetal.solutions)



Welcome to Indian Metals Solutions  
(IMS) Your Trusted Partner in Non-Ferrous  
and Ferrous Casting & Forging Indian Metals  
Solutions Private Limited (IMS) is an Indian registered  
company with manufacturing facilities in India and Sales office in  
USA. Specializing in non-ferrous and ferrous casting and forging, IMS  
provides competitive pricing and high-quality products, leveraging its strategic  
manufacturing locations.

# Why Choose IMS?



End-to-End Solutions: From manufacturing to supply chain management and warehousing, IMS offers comprehensive services to ensure efficiency and effectiveness. Experienced Team: Our leadership boasts over 100 years of combined experience in the automotive and industrial sectors, along with 40+ years in the electrical components and assembly market. Commitment to Quality: Driven by our Quality Management Systems, we ensure reliable quality and stringent process controls.

## Certified Excellence

IMS is ISO 9001:2015 certified, with certified UL testing lab on-site. We are also SMETA certified by Sedex for Labor Standards, Health & Safety, Environmental Assessment, and Business Ethics.

## Our Offerings

Explore our wide range of products and services, designed to meet required standards of quality and performance.

## Mission statement

IMS aims to provide consistent quality, cost & on-time delivery to our customers, through continuous improvement in its processes.

## EARTHING & LIGHTNING PROTECTION SYSTEMS ▾

∗ Combination Ground Clamp for Bare Wire	8
∗ Combination Pipe Clamp for Armored Wire	8
∗ Ground Pipe Clamps	9
∗ Ground Pipe Clamp Zinc die cast	10
∗ Ground Pipe Clamp Armored wire Zinc die cast	10
∗ Ground Rod Clamps	11
∗ Ground Rod Couplings- Threaded and Threadless	12
∗ Stainless Steel Grounding Rods	13
∗ Copper Bonded Grounding Rods	14
∗ Solid Copper Grounding Rods	15
∗ U Bolt Connectors	16,17
∗ Earthing Arrestor Components	18

## CABLE TERMINAL ▾

∗ Copper compression lugs- Short barrel,Two holes	19
∗ Copper compression lugs-Long barrel,One hole	19
∗ Copper Compression lugs-Short barrel,one holes	20
∗ Copper compression lugs-Long barrel,Two hole	21
∗ Crimping Type Copper Tubular Cable Terminal Ends	22
∗ Crimping Type Copper Tubular Cable Terminal Ends	23
∗ Crimping Type Copper Tubular Cable Terminal Ends	24
∗ Copper Standard wall Starter Terminal Ends	25
∗ Copper HT lugs with 2 Holes,Long Rounded Palm	26
∗ Copper HT lugs with 2 Holes,Long Rounded Palm	27
∗ Tinned Copper Ring Type Cable Terminal Ends	28
∗ Tinned Copper Ring Type Cable Terminal Ends	29
∗ Tinned Copper Ring Type Cable Terminal Ends	30

## CABLE TERMINAL ▾

∗ Butt Spilce Connector	31
∗ Copper compression Sleeves,Short Barrel	32
∗ Copper compression Sleeves,Long Barrel	32
∗ Butt Connector	33
∗ Copper compression Lugs- One hole offset tang	34

## CONNECTORS ▾

∗ Copper Compression Type "C" Crimp Connectors	35
∗ Mechanical Lugs Aluminum	36
∗ Aluminum Lay in Lugs & Solar Lay in Lug	37
∗ Singe Hole Solderless Lug	37

## MECHANICAL CONNECTORS ▾

∗ Copper Split bolt connectors	38
∗ Copper Split bolt connectors -Tin plated	39
∗ Hot Line Clamps - Bronze	40
∗ Hot Line Clamps -Aluminum	41
∗ KUL Type Clamp, Vise Type Clamps	42
∗ Vise Type- Telecom and Ground Connectors	43
∗ Tank Ground Connectors Type GTCL& GTCS 90	44
∗ Grounding Terminal Type -LAT	45

## SUBSTATION / TRANSFORMER CONNECTORS ▾

∗ Spade Terminals	46
-------------------	----

## CLAMPS AND HANGERS -Rigid fittings ▾

∗ Beam Clamps- Ductile Iron (Zn plated/HDG)	47
∗ Clamp Back & One Hole Starps - Ductile Iron (Zn Plated/HDG )	48

## CLAMP TYPES ROMEX CONNECTORS ▾

∗ Weatherproof Boxes	50
----------------------	----

## ACCESSORIES ▾

∗ Green Ground Screw and Clip	51
∗ Fastener Fixing	52,53





## Quality Policy



- Indian Metals Solutions Private Limited are Manufacturing & Supply of Ferrous & Non- Ferrous Castings, Forging, Machined & Assembled Components is committed to produce products confirming to customer requirement and timely supplies products as per customer's needs and maintain customer satisfaction.

This will be doing by quality of product, continual improvement in process and effective implementation of quality management system as per ISO 9001:2015.

# CERTIFICATES



## Ground Clamps

### I Combination Ground Clamp For Bare Wire

**Application:**

Used to connect bare copper wire to water pipe or rebar  
 Lay-in style lug for fast and easy installation of ground wires  
 Cast from high strength, highly conductive copper alloy  
 Approved for Direct Burial in earth and concrete  
 Available with bronze hardware

Part Number	Wire Range	Pipe Range	Main	
	AWG (CU)		Rebar Range	Rod Range
IB-7	10-2 STR 10 SOL	1/2"-1"	1/2"- 3/4" (#4 - #6)	3/8"-1"



**Standards:**

UL 467  
 CSA C22.2 No. 41;22  
 NEC Article 250

**Certifications:**



### I Ground Clamp For Armored Wire

**Application:**

Used to connect bare or armored copper wire to steel water pipe  
 Integral clamp securely holds armor  
 Cast from high strength, highly conductive copper alloy  
 Approved for approved for use with copper ground rod  
 Standard hardware is zinc plated steel

Cat no.	Wire Range	Main	
	AWG (CU)	Pipe Range	Rod Range
I-6	8-4 STR 8 SOL	1/2"-1"	1/2"-1"



**Standards:**

UL 467  
 CSA C22.2 No. 41;22  
 NEC Article 250

\*I-6SS and I-6D available for direct burial applications with stainless steel and silicon bronze Hardware.





## Ground Clamps

### I Ground Pipe Clamps for Bare Wire

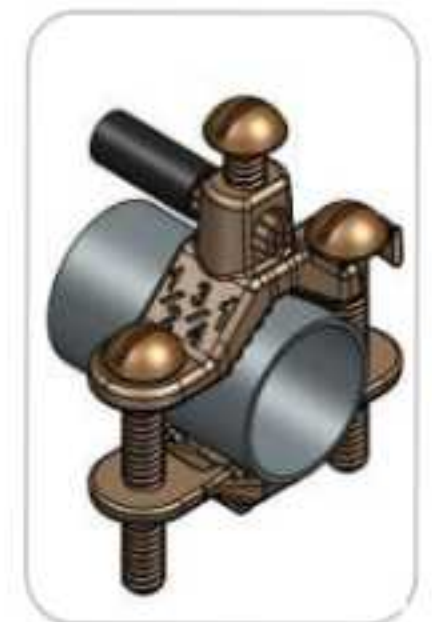
#### Application:

Used to connect bare copper wire to galvanized steel water pipe or copper tubing

Cast from high strength, highly conductive copper alloy

Select models approved for use with rebar and copper ground rod

Part Number	Wire Range		Range		Screw material
	AWG (CU)	AWG (AL)	Pipe Range	Rebar Range	
I-11	10-2 STR	10 SOL	1/2" - 1"	5/8" & 3/4"	Zinc Plated Steel
I-11 DB	10-2 STR	10 SOL	1/2" - 1"	5/8" & 3/4"	Silicon bronze
I-11 SS	10-2 STR	10 SOL	1/2" - 1"	5/8" & 3/4"	Stainless Steel
I-11B	10-2 STR	10 SOL		5/8" & 3/4"	Brass
I-22	10-2 STR	10 SOL	1-1/4" - 2"	-	Zinc Plated Steel
I-4	10-2 STR	10 SOL	2-1/2" - 4"	-	Zinc Plated Steel
I-8	10-2 STR	10 SOL	4" - 6"	-	Zinc Plated Steel



For Direct Burial : I-11DB & I-11SS

For Imperial Rebar Range is # 5 to #6

#### Standards:

UL 467

CSA C22.2 No. 41;22

NEC Article 250

#### Certifications:



## Ground Clamps

### I Ground Clamp Zinc Die cast

#### Application:

Used to connect bare copper wire to water pipe

Cast from high strength, Zinc alloy.

Clamp is reversible

Wire can be use 10 Sol to 2 STR.

Part Number	Wire Range	Pipe Range	Main	
	AWG (CU-AL)		Rebar Range	Trade Size
I-11Z	8-2 STR 10 SOL- CU	1/2"-1"	1/2"- 3/4" (#4 - #6)	1/2"-1"

#### Standards:

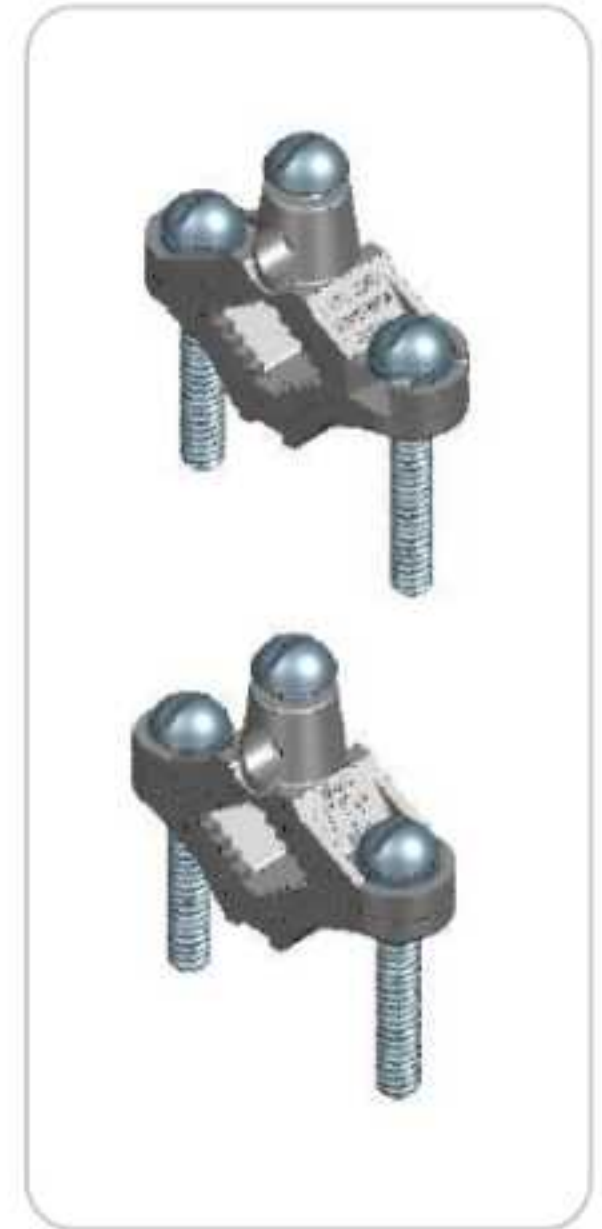
UL 467

CSA C22.2 No. 41;22

NEC Article 250

" This is Under  
cULus testing  
and it will  
complete soon"

#### Certifications:



### I Ground Clamp For Armored Wire Zinc Die cast

#### Application:

Used to connect bare or armored copper wire to steel water pipe

Standard hardware is zinc plated steel

Integral clamp securely holds armor

Cat no.	Wire Range	Main	
	AWG (AL-CU)	Pipe Range	Rod Range
I-6Z	6-8 STR 8 SOL	1/2"-1"	1/2"-1"

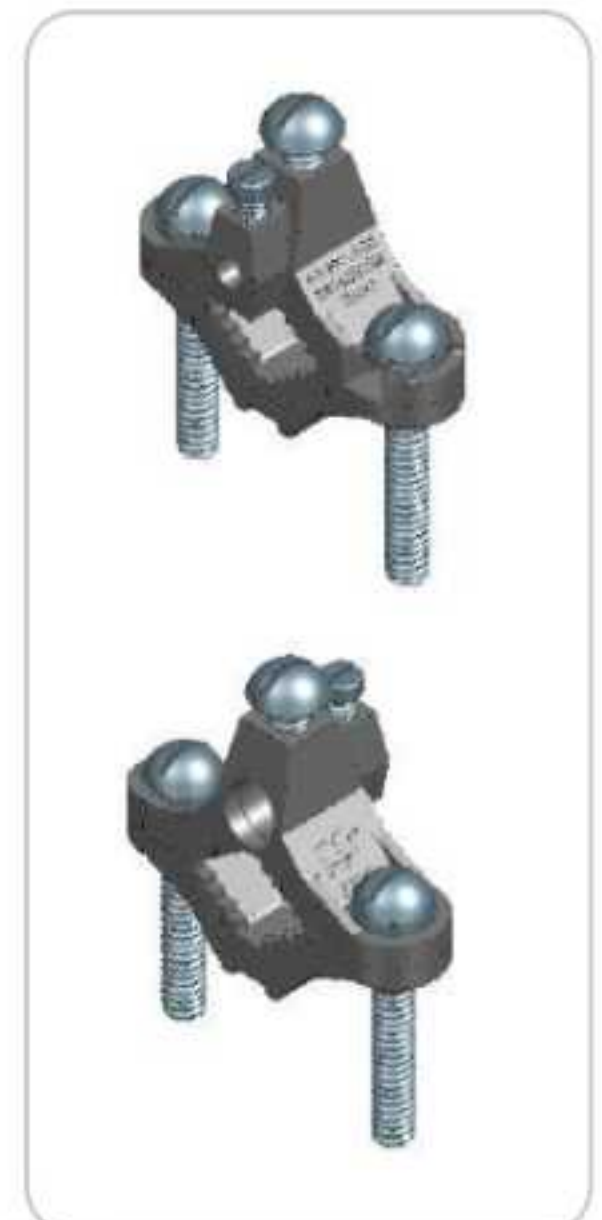
#### Standards:

UL 467

CSA C22.2 No. 41;22

NEC Article 250

#### Certifications:



## Ground Clamps

### Ground Rod Clamps

#### Application:

Used to connect bare copper wire to copper ground rod or rebar  
 Cast from high strength, highly conductive copper alloy  
 All listed models approved for Direct Burial in earth and concrete

Part Number	Wire Range		Range		Screw material
	AWG (CU)	AWG (AL)	Ground Rod	Steel Rebar	
IRC12	10-2 STR	10 SOL	1/2"	3/8"	Stainless Steel
IRC58	10-2 STR	10 SOL	1/2" - 5/8"	3/8" - 1/2"	Stainless Steel
IRC34	10-2 STR	10 SOL	1/2" - 3/4"	3/8" - 1/2"	Stainless Steel

All Sizes listed For Direct Burial applications

For Imperial Rebar Range: IRC12 # 3 & IRC58 to IRC34 #3 - #4

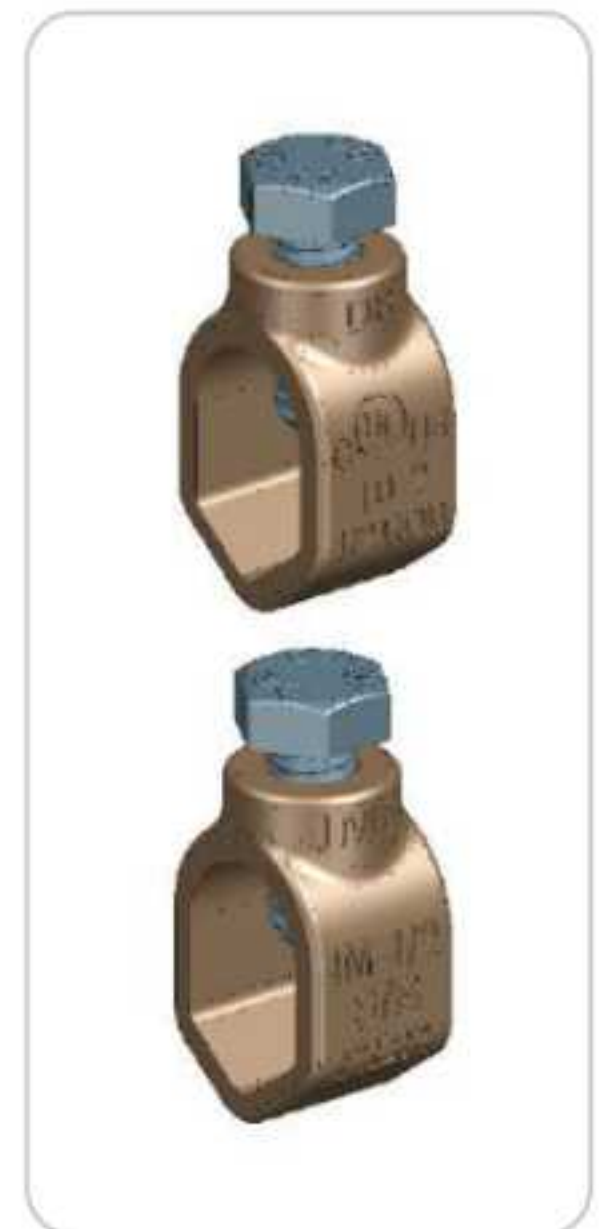
#### Standards:

UL 467

CSA C22.2 No. 41;22

NEC Article 250

#### Certifications:



## Couplings

### Ground Rod Couplings

#### Application:

Used as a mechanical connection between sectional ground rods.  
High-strength corrosion-resistant copper alloy ensure low-resistance connection



### Threaded Couplings

Rod Diameter (in.)	Thread Size	Weight/Case	Per Box	Part No.
1/2	9/16 in. - 12 UNS	17	25	TC12
5/8	5/8 in. - 11 UNS	25	25	TC58
3/4	3/4 in. - 10 UNS	38	25	TC34
1	1 - 8 UNS	75	10	TC01



Body - Silicon Bronze

### Threadless Couplings

Size (in.)	Dimensions (in.)		Weight/Case	Per Box	Part No.
	Length	Diameter			
1/2	3.0	0.78	----	25	TLC12
5/8	2.5	0.69	----	25	TLC58
3/4	3.0	0.97	----	25	TLC34



Body - Silicon Bronze



## Grounding Rods

### Stainless Steel Grounding Rods

#### Application

Stainless steel ground rods are used to overcome many of the problems caused by galvanic corrosion which can take place between dissimilar metals buried in close proximity

Provide a means of conducting current from a ground wire into the ground

Offered in Type 316 SS and Type 304 SS

Offered in 8- and 10-foot lengths

Manufactured in stainless steel to help prevent corrosion

Can be installed using ordinary hand tools and require little maintenance or repair

Provided in a bright, polished finish that does not require touch up or painting



Part Number	Diameter		Length		PKG	Weight (KGS)
	Inches	MM	FT	Meter		
ISS-148*	5/8"	14.2	8'	2.44	10	3.28
ISS-1410	5/8"	14.2	10'	3.05	10	4.10
ISS-1710	3/4"	17.2	10'	3.05	5	5.50
ISS-2410	1.0"	23.1	10'	3.05	1	10.23

\* Stainless Steel Ground rod is UL listed.

#### Standards:

UL 467

CSA C22.2 No. 41;22

NEC Article 250

NEMA GR-1

#### Certifications:



## Grounding Rods

### Copper Bonded Grounding Rods

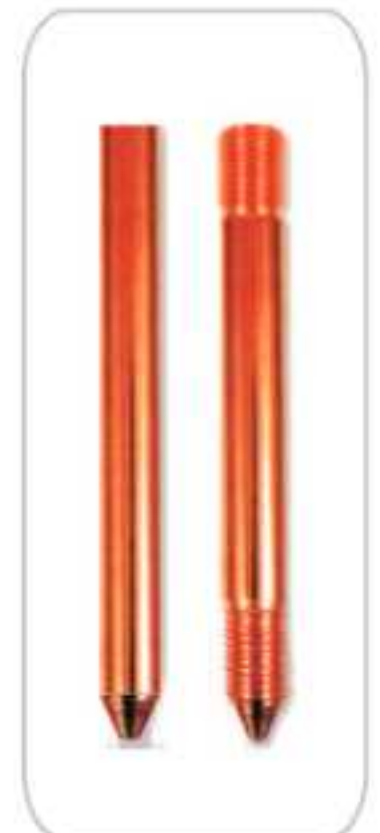
#### Application

Copper bonded ground rods, offers a complete range of rods, driving sleeves and studs, rod coupling methods and connections for reliable grounding in nearly any application.

It is made from low Carbon Steel as per IS 2062 standard with high tensile strength material. Low carbon steel rods are molecularly bonded with 99.9% pure electrolytic copper. Our 250 microns copper bonded earth rods of 14.2 mm dia. & 17.2 mm dia. are compliant as per IEC 62561-2.

Perfectly bonded rod will last longer, drive easier and will not crack.

Part Number	Length		Copper Thickness		Thds.	Weight (KGS)	Shank Diameter
	FT	MM	MIL	µm			
IBR-305	10	3050	10	254	5/8"	3.7	14.2 MM
IBR-305A	10	3050	10	254	5/8"	3.7	14.2 MM
IBR-305B	10	3050	10	254	/	5.5	17.2 MM
IBR-305C	10	3050	10	254	3/4"	5.5	17.2 MM
IBR-305D	10	3050	10	254	1/2"	3	12.7 MM
IBR-305E	8	2440	10	254	/	2.4	12.7 MM
IBR-244*	8	2440	10	254	/	2.4	12.7 MM
IBR-244A*	8	2440	10	254	5/8"	3	14.2 MM
IBR-244B*	8	2440	10	254	/	4.4	17.2 MM
IBR-244C*	8	2440	10	254	3/4"	4.4	17.2 MM
IBR-244D*	8	2440	10	254	1/2"	2.4	12.7 MM
IBR-244E*	8	2440	10	254	/	3	14.2 MM



\* Copper bonded Ground rod is UL listed.

#### Standards:

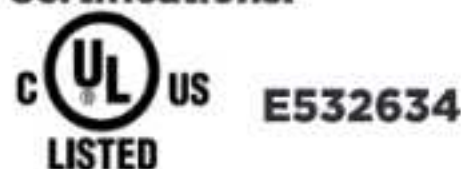
UL 467

CSA C22.2 No. 41;22

NEC Article 250

NEMA GR-1

#### Certifications:



These are UL listed Grounding / Earthing Rods.

As per UL 467 Standard, the Copper Bonding on UL listed Grounding / Earthing Rods will be min. 254 microns.

## Grounding Rods

### Solid Copper Grounding Rod

#### Internally Threaded

#### Application

For use where extreme soil condition such as high salt or moisture content demands high corrosion resistance and exceptionally long life of rods. Solid Copper Earth Rods are made from high conductivity hard drawn copper

Part Number	Rod dia.	Dimension	Length
	MM		
ISC-1021	20	20 X 2540 or 10'	2540 or 10'

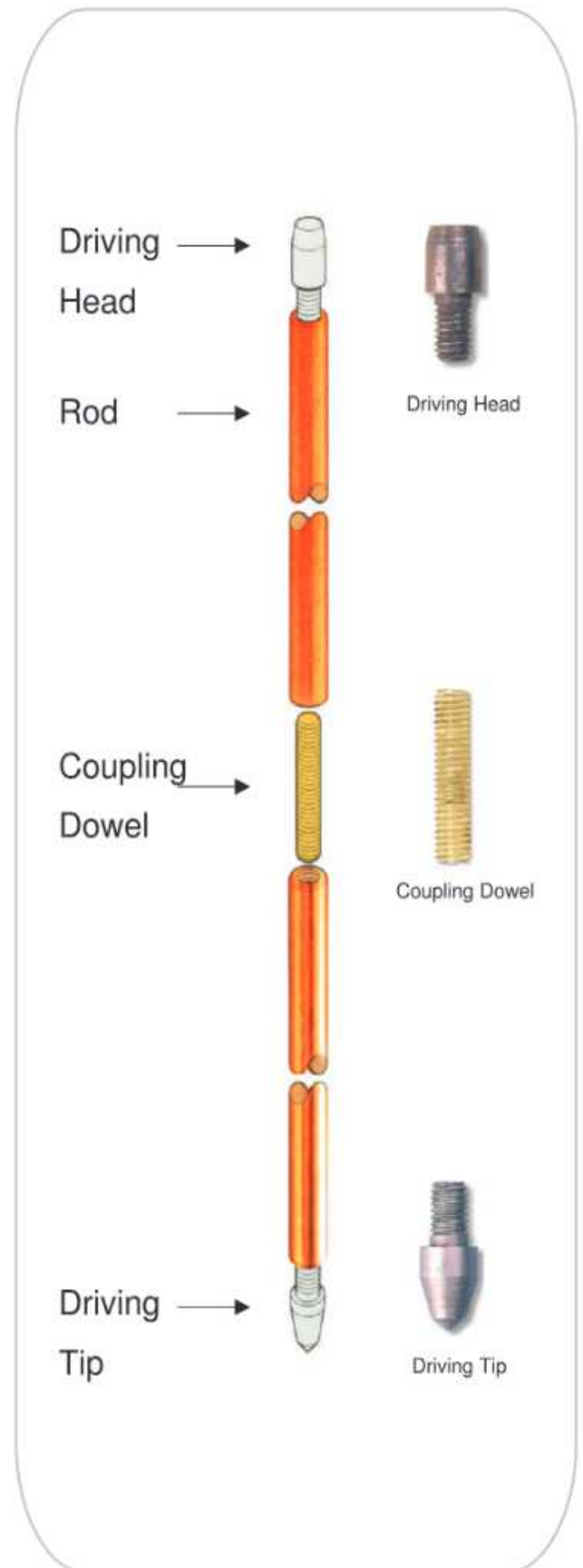
#### Standards:

UL 467  
 CSA C22.2 No. 41;22  
 NEC Article 250  
 NEMA GR-1

#### Certifications:



These are UL listed Grounding / Earthing Rods.  
 Tested As per UL 467 Standard




## U Bolt Connectors

### U Bolt Rod Clamps Type - E

Nominal Rod Diameter	Hole Centres	Tape Width	Weight each	Per Box	Part No.
5/8"	37mm	-	0.20kg	5	URC16
3/4"	37mm	-	0.20kg	5	URC20
1"	37mm	-	0.20kg	5	URC25
1 1/4"	41mm	-	0.26kg	5	URC31
1 1/2"	46mm	-	0.37kg	5	URC38
2"	64mm	-	0.44kg	5	URC50

 Body - Gunmetal  
Bolts - Copper & Stainless Steel


 Tightening torque 12 Nm



### U Bolt Rod to Tape Clamps Type - E

Nominal Rod Diameter	Hole Centres	Tape Width	Weight each	Per Box	Part No.
5/8"	37mm	25mm	0.26kg	5	URCT25
3/4"	37mm		0.26kg	5	URCT25
1"	37mm		0.26kg	5	URCT25
1 1/4"	41mm	31mm	0.32kg	5	URCT31
1 1/2"	46mm	38mm	0.38kg	5	URCT38
2"	64mm	50mm	0.44kg	5	URCT50

 Body - Gunmetal  
Bolts - Copper & Stainless Steel

 Tightening torque 12 Nm

### U Bolt Rod To Cable Clamps Type - GUV

Nominal Rod Diameter	Conductor Range	Weight each	Per Box	Part No.	
5/8"	16mm	16 - 95mm <sup>2</sup>	0.37kg	5	URCC1695
3/4"	20mm	16 - 70mm <sup>2</sup>	0.37kg	5	URCC1695
5/8"	16mm	70 - 185mm <sup>2</sup>	0.37kg	5	URCC16185
3/4"	20mm	70 - 150mm <sup>2</sup>	0.37kg	5	URCC16185
5/8"	16mm	150 - 300mm <sup>2</sup>	0.62kg	5	URCC16300
3/4"	20mm	150 - 300mm <sup>2</sup>	0.62kg	5	URCC16300

 Body - Gunmetal  
Bolts - Copper & Stainless Steel

 Tightening torque 12 Nm





## U Bolt Connectors


### U Bolt Rod To Cable Clamp Type - SCE

Heavy Duty Copper Alloy Double Plate Clamps are Suitable for Connecting Earth Rod with Stranded Cables / Round Conductors.

Body - Gunmetal, U Bolt - Copper

Nominal Rod Diameter	Conductor Range mm <sup>2</sup>	Weight each	Per Box	Part No.
12 - 20mm	35 - 185	0.39kg	5	URCS20185
16 - 25mm	70 - 300	0.39kg	5	URCS25300

 Body - Gunmetal  
Bolts - Copper & Stainless Steel

 Tightening torque 12 Nm




### U Bolt Pipe to Cable Clamp Type - PUB

These 'U' Bolt Pipe to Cable Clamp are used for universal parallel or 90 connection of cable to pipe. It is also used for fence post grounding connection

Pipe Diameter	Conductor Range mm <sup>2</sup>	Weight each	Per Box	Part No.
1/2"	35 - 95	0.25kg	5	URPB1295
3/4"	35 - 95	0.25kg	5	URPB2095
1"	35 - 95	0.25kg	5	URPB2595
1 1/4"	35 - 95	0.48kg	5	URPB3195
1 1/2"	35 - 95	0.48kg	5	URPB3895
2"	35 - 95	0.53kg	5	URPB5095
2 1/2"	35 - 95	0.62kg	5	URPB6295
3"	35 - 95	0.70kg	5	URPB0395
4"	35 - 95	0.80kg	5	URPB0495
5"	35 - 95	1.00kg	5	URPB0595
6"	35 - 95	1.20kg	5	URPB0695

 Body - Gunmetal  
Bolts - Copper & Stainless Steel

 Tightening torque 12 Nm



## | Earthing Arrestor Components



- IMS Manufacturing Earthing arrestor components in Brass and Aluminium as per customer requirements. These are used in Earthing

<b>Material</b>	<b>Process</b>	<b>Finish</b>
Brass	Sand Casting	Machined & Plating
Aluminum	Sand Casting	Machined & Plating

## Copper compression lugs-Short barrel, Two holes

### Application

Used for reliable electrical connections Rated from 600 volts up to 35,000 volts  
Temperature rating: 90°C High conductivity seamless copper

Wire Size	Bolt Size	Dimensions in Inches					Colour Code	Product Code
		OD	A1	A	F	G		
8	#10	0.281	0.440	1.820	1.260	0.630	Red	IS-8L2
6	1/4"	0.297	0.710	2.090	1.260	0.630	Blue	IS-6L2
4	1/4"	0.344	0.710	2.090	1.260	0.630	Gray	IS-4L2
2	5/16"	0.422	0.830	2.620	1.610	0.750	Brown	IS-2L2
1	1/4"	0.469	0.830	2.280	1.260	0.630	Green	IS-1L2
1/0	5/16"	0.517	0.830	2.874	1.810	0.984	Pink	IS-1/0L2
1/0	3/8"	0.517	0.830	2.830	1.810	1.000	Pink	IS-1/0-38L2
2/0	3/8"	0.563	0.940	2.990	1.850	1.000	Black	IS-2/0L2
2/0	1/2"	0.563	0.940	4.170	2.990	1.750	Black	IS-2/0-12L2
3/0	1/2"	0.609	0.984	4.290	2.990	1.750	Orange	IS-3/0L2
4/0	1/2"	0.688	1.142	4.290	3.031	1.750	Purple	IS4/0L2
4/0	3/8"	0.688	1.142	4.449	3.031	1.752	Purple	IS-4/0-38L2
250 MC	1/2"	0.750	1.060	4.410	2.990	1.750	Yellow	IS-250L2
300 MC	1/2"	0.813	1.060	4.410	2.990	1.750	White	IS-300L2
350 MC	1/2"	0.875	1.100	4.530	2.990	1.750	Red	IS-350L2
400 MC	1/2"	0.937	1.180	4.690	2.990	1.750	Blue	IS-400L2
500 MC	1/2"	1.063	1.380	4.880	2.990	1.750	Brown	IS-500L2
600 MC	3/8"	1.188	1.500	4.960	2.990	1.750	Green	IS-600L2
600 MC	1/2"	1.188	1.500	5.040	2.990	1.750	Green	IS-600-12L2

### Standards

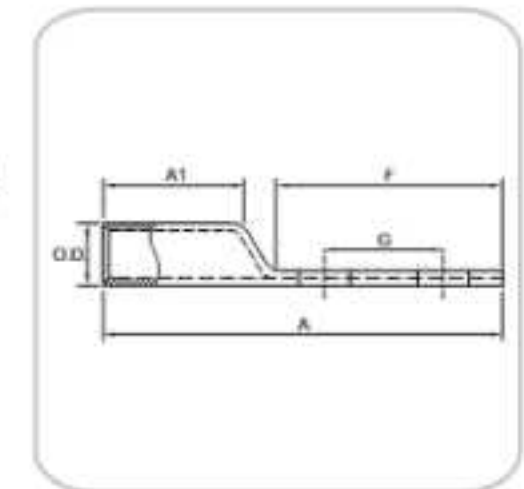
UL 486A-486B



### Certifications



E532633



Tolerance : as per UL FUS.

## Copper compression lugs-Long barrel, One holes

Wire Size	Colour Code	Bolt Size	Dimensions in Inches		Product Code
			D	F	
8	RED	-	0.787	1.520	ICRB-8L
6	BLUE	1/4"	0.925	1.813	ICRB-6L
4	GRAY	1/4"	0.984	1.813	ICRB-4L
4	GRAY	5/16"	0.984	1.813	ICRB-4L-516
3	WHITE	1/4"	1.063	2.008	ICRA-3L
2	BROWN	5/16"	1.102	2.047	ICRB-2L
2	BROWN	1/4"	1.339	2.717	ICRB-2L-14
2	BROWN	3/8"	1.339	2.717	ICRB-2L-38
1	GREEN	5/16"	1.142	2.087	ICRA-1L
1/0 MCM	PINK	5/16"	1.339	2.717	ICRA-1/0L
2/0 MCM	BLACK	3/8"	1.260	2.656	ICRA-2/0L
3/0 MCM	ORANGE	1/2"	1.299	2.906	ICRB-3/0L
4/0 MCM	PURPLE	1/2"	1.535	2.969	ICRB-4/0L
250 MCM	YELLOW	1/2"	1.575	3.188	ICRA-250L
300 MCM	WHITE	1/2"	1.811	3.563	ICRA-300L
350 MCM	RED	1/2"	2.008	3.563	ICRA-350L
400 MCM	BLUE	5/8"	1.850	3.740	ICRA-400L
500 MCM	BROWN	5/8"	2.244	4.375	ICRA-500L
600 MCM	GREEN	5/8"	2.362	4.646	ICRA-600L

### Standards

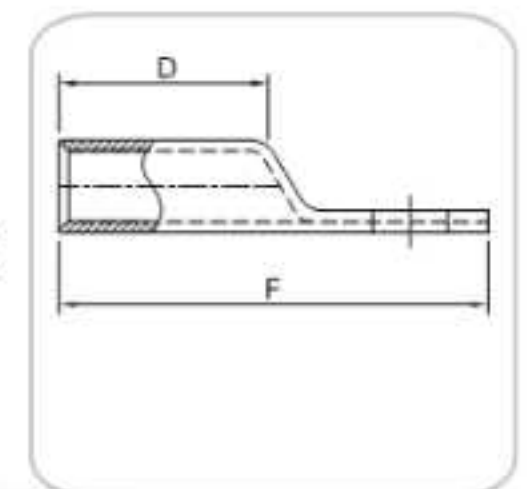
UL 486A-486B



### Certifications



E532633



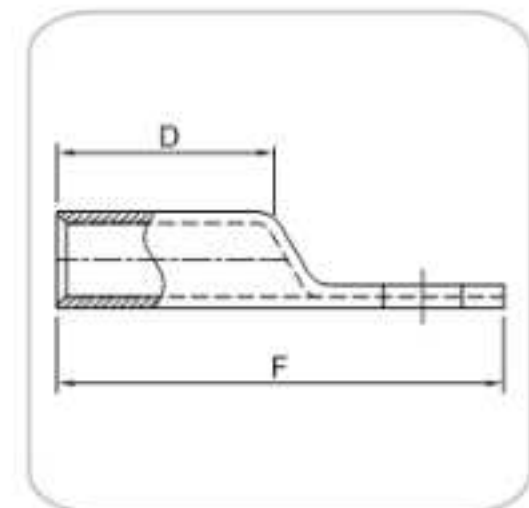
Tolerance : as per UL FUS.

## Copper compression lugs-Short barrel, one holes

### Application

Used for reliable electrical connections Rated from 600 volts up to 35,000 volts  
Temperature rating: 90°C High conductivity seamless copper

Wire Size	Colour Code	Bolt Size	Dimensions in Inches		Product Code
			D	F	
6	BLUE	#10	0.812	1.5	ICRA-6
6	BLUE	1/4"	0.812	1.5	ICRA-6
4	GRAY	#10	0.812	1.5	ICRA-4
4	GRAY	5/16"	0.812	1.5	ICRA-4-516
4	GRAY	1/4"	0.812	1.5	HCRA-A-4
3	WHITE	1/4"	0.812	1.5	ICRA-3
2	BROWN	1/4"	0.875	1.812	ICRA-2
2	BROWN	5/16"	0.875	1.844	ICRA-2
2	BROWN	3/8"	0.875	1.844	ICRA-2
1	GREEN	5/16"	0.875	1.875	ICRA-1
1	GREEN	1/4"	0.875	1.875	ICRA-1-14
1	GREEN	3/8"	0.875	1.875	ICRA-1-38
1/0	PINK	5/16"	0.875	1.875	ICRA-0
1/0	PINK	1/4"	0.875	1.875	ICRA-0-14
1/0	PINK	3/8"	0.875	1.875	ICRA-0
2/0	BLACK	3/8"	0.937	2.093	ICRA-2/0
2/0	BLACK	1/4"	0.937	2.093	ICRA-2/0-14
2/0	BLACK	5/16"	0.937	2.093	ICRA-2/0
3/0	ORANGE	3/8"	1	2.313	ICRA-3/0
3/0	ORANGE	1/4"	1	2.313	ICRA-3/0-14
3/0	ORANGE	1/2"	1	2.313	ICRA-3/0
3/0	ORANGE	5/16"	1	2.313	ICRA-3/0
4/0	PURPLE	3/8"	1	2.344	ICRA-4/0
4/0	PURPLE	1/4"	1	2.344	ICRA-4/0-14
4/0	PURPLE	1/2"	1	2.344	ICRA-4/0
4/0	PURPLE	5/16"	1	2.313	ICRA-4/0
250MCM	YELLOW	1/2"	1.063	2.625	ICRA-250
250MCM	YELLOW	3/8"	1.063	2.625	ICRA-250-38
300MCM	WHITE	1/2"	1.063	2.625	ICRA-A-300
300MCM	WHITE	3/8"	1.063	2.625	ICRA-300-38
300MCM	WHITE	5/16"	1.063	2.625	ICRA-300-516
300MCM	WHITE	5/8"	1.063	2.625	ICRA-300-58
350MCM	RED	1/2"	1.125	2.913	ICRA-350
400MCM	BLUE	5/8"	1.188	3.313	ICRA-400
400MCM	BLUE	1/2"	1.188	3.313	ICRA-400-12
500MCM	BROWN	5/8"	1.375	3.5	ICRA-500
500MCM	BROWN	1/2"	1.375	3.5	ICRA-500-12
600MCM	GREEN	5/8"	1.654	3.996	ICRA-600
600MCM	GREEN	1/2"	1.654	3.996	ICRA-600-12



### Standards

UL 486A-486B

### Certifications



E532633

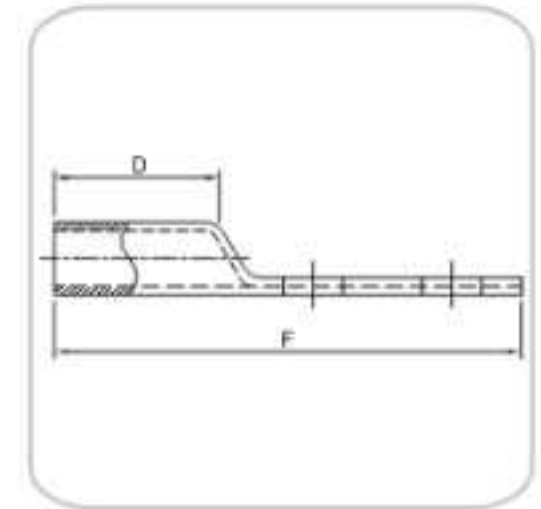
Tolerance : as per UL FUS.

## Copper compression lugs-Long barrel, Two holes

Wire Size	Colour Code	Dimensions in Inches					Product Code
		A	C	D	B	J	
1.5	4.2	1.8	3.7	8	6	17	IT 1.5 - 4
	5.2	1.8	3.7	8	6	17	IT 1.5 - 5
	6.5	1.8	3.7	10	6	18	IT 1.5 - 6
	8.4	1.8	3.7	12	7	24	IT 1.5 - 8
2.5	4.2	2.4	4	8	8	19	IT 2.5 - 4
	5.2	2.4	4	8	8	19	IT 2.5 - 5
	6.5	2.4	4	10	8	21	IT 2.5 - 6
	8.4	2.4	4	12	8	26	IT 2.5 - 8
4	4.2	3.1	4.8	10	8	21	IT 4 - 4
	5.2	3.1	4.8	10	8	21	IT 4 - 5
	6.5	3.1	4.8	10	8	21	IT 4 - 6
	8.4	3.1	4.8	12	8	26	IT 4 - 8
	10.5	3.1	4.8	15	9	30	IT 4 - 10
6	4.2	3.8	5.5	10	10	24	IT 6 - 4
	5.2	3.8	5.5	10	10	24	IT 6 - 5
	6.5	3.8	5.5	10	10	24	IT 6 - 6
	8.4	3.8	5.5	12	10	28	IT 6 - 8
	10.5	3.8	5.5	15	10	32	IT 6 - 10
10	5.2	4.5	6.2	11	10	26	IT 10 - 5
	6.5	4.5	6.2	11	10	26	IT 10 - 6
	8.4	4.5	6.2	12	10	28	IT 10 - 8
	10.5	4.5	6.8	15	11	33	IT 10 - 10
	13	4.5	6.8	18	11	36	IT 10 - 12
16	5.2	5.4	7.1	12	12	30	IT 16 - 5
	6.5	5.4	7.1	12	12	30	IT 16 - 6
	8.4	5.4	7.1	12	12	30	IT 16 - 8
	10.5	5.5	7.6	15	12	36	IT 16 - 10
	13	5.5	7.6	17	12	39	IT 16 - 12
20	17	5.5	7.6	21	12	44	IT 16 - 16
	8.4	6	7.7	12	12	32	IT 20 - 8
	25	6.5	6.8	8.8	13	12	30
25	8.4	6.8	8.8	13	12	30	IT 25 - 8
	10.5	6.8	8.8	15	13	36	IT 25 - 10
	13	6.8	9.2	17	15	41	IT 25 - 12
	17	6.8	9.2	21	15	47	IT 25 - 16
	35	6.5	8.2	10.6	15.3	13.5	37
35	8.4	8.2	10.6	15.3	13.5	37	IT 35 - 8
	10.5	8.2	10.6	15.3	13.5	37	IT 35 - 10
	13	8.2	10.6	18	13.5	41	IT 35 - 12
	17	8.2	10.6	22	13.5	50	IT 35 - 16
	50	6.5	9.5	12.4	17.8	17	41
50	8.4	9.5	12.4	17.8	17	41	IT 50 - 8
	10.5	9.5	12.4	17.8	17	41	IT 50 - 10
	13	9.5	12.4	20	17	45	IT 50 - 12

### Application

Used for reliable electrical connections  
 Rated from 600 volts up to 35,000 volts or less,  
 proper high voltage spacing and insulation techniques  
 Temperature rating: 90°C  
 High conductivity seamless copper



Tolerance : as per UL FUS.

Product code \* mark lug is cULus listed

### Standards

UL 486A-486B

### Certifications



E532633

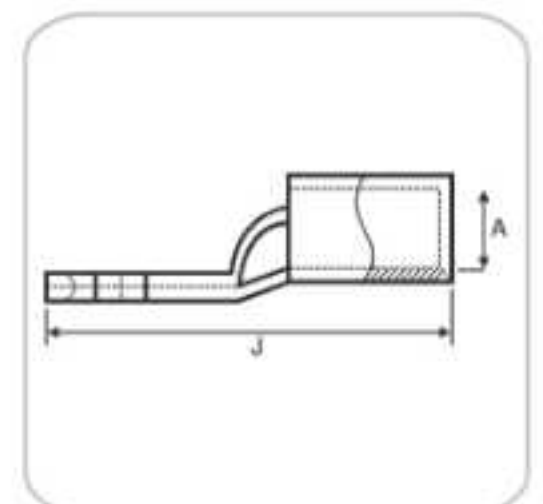
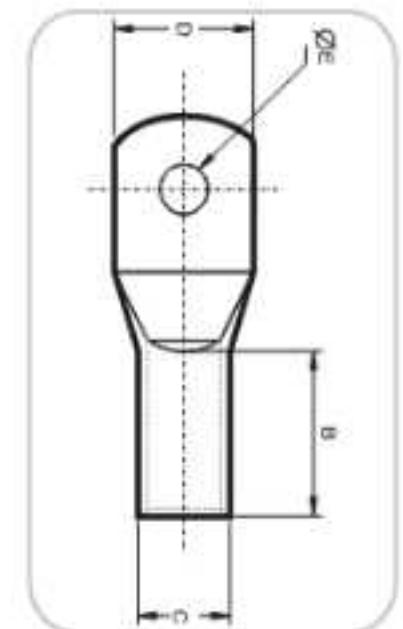
## Cramping Type Copper Tubular Cable Terminal Ends

Wire Size	Colour Code	Dimensions in Inches					Product Code
		A	C	D	B	J	
1.5	4.2	1.8	3.7	8	6	17	IT 1.5 - 4
	5.2	1.8	3.7	8	6	17	IT 1.5 - 5
	6.5	1.8	3.7	10	6	18	IT 1.5 - 6
	8.4	1.8	3.7	12	7	24	IT 1.5 - 8
2.5	4.2	2.4	4	8	8	19	IT 2.5 - 4
	5.2	2.4	4	8	8	19	IT 2.5 - 5
	6.5	2.4	4	10	8	21	IT 2.5 - 6
	8.4	2.4	4	12	8	26	IT 2.5 - 8
4	4.2	3.1	4.8	10	8	21	IT 4 - 4
	5.2	3.1	4.8	10	8	21	IT 4 - 5
	6.5	3.1	4.8	10	8	21	IT 4 - 6
	8.4	3.1	4.8	12	8	26	IT 4 - 8
	10.5	3.1	4.8	15	9	30	IT 4 - 10
6	4.2	3.8	5.5	10	10	24	IT 6 - 4
	5.2	3.8	5.5	10	10	24	IT 6 - 5
	6.5	3.8	5.5	10	10	24	IT 6 - 6
	8.4	3.8	5.5	12	10	28	IT 6 - 8
	10.5	3.8	5.5	15	10	32	IT 6 - 10
10	5.2	4.5	6.2	11	10	26	IT 10 - 5
	6.5	4.5	6.2	11	10	26	IT 10 - 6
	8.4	4.5	6.2	12	10	28	IT 10 - 8
	10.5	4.5	6.8	15	11	33	IT 10 - 10
16	13	4.5	6.8	18	11	36	IT 10 - 12
	5.2	5.4	7.1	12	12	30	IT 16 - 5
	6.5	5.4	7.1	12	12	30	IT 16 - 6
	8.4	5.4	7.1	12	12	30	IT 16 - 8
	10.5	5.5	7.6	15	12	36	IT 16 - 10
20	13	5.5	7.6	17	12	39	IT 16 - 12
	17	5.5	7.6	21	12	44	IT 16 - 16
	8.4	6	7.7	12	12	32	IT 20 - 8
25	6.5	6.8	8.8	13	12	30	IT 25 - 6
	8.4	6.8	8.8	13	12	30	IT 25 - 8
	10.5	6.8	8.8	15	13	36	IT 25 - 10
	13	6.8	9.2	17	15	41	IT 25 - 12
	17	6.8	9.2	21	15	47	IT 25 - 16
35	6.5	8.2	10.6	15.3	13.5	37	IT 35 - 6
	8.4	8.2	10.6	15.3	13.5	37	IT 35 - 8
	10.5	8.2	10.6	15.3	13.5	37	IT 35 - 10
	13	8.2	10.6	18	13.5	41	IT 35 - 12
	17	8.2	10.6	22	13.5	50	IT 35 - 16
50	6.5	9.5	12.4	17.8	17	41	IT 50 - 6
	8.4	9.5	12.4	17.8	17	41	IT 50 - 8
	10.5	9.5	12.4	17.8	17	41	IT 50 - 10
	13	9.5	12.4	20	17	45	IT 50 - 12

Tolerance : as per UL FUS.

### Application

Used for allow accurate position dies during the cramping operation  
Tin plating on the terminlas avoids oxidation and  
avoid maximum corrosion protection  
High conductivity seamless copper



**Material :** E - Copper  
**Finish :** Electro Tinned

### Standards

UL 486A-486B

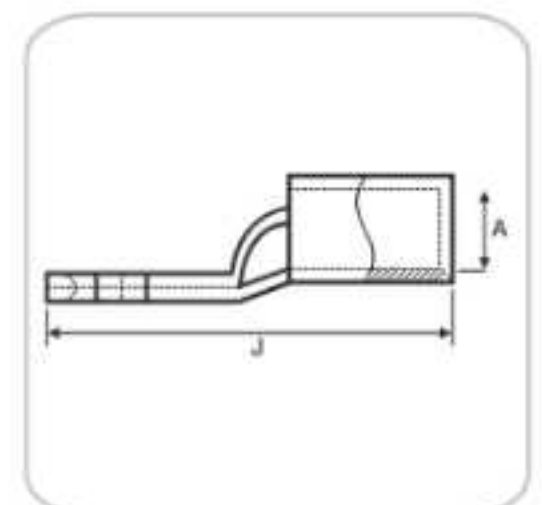
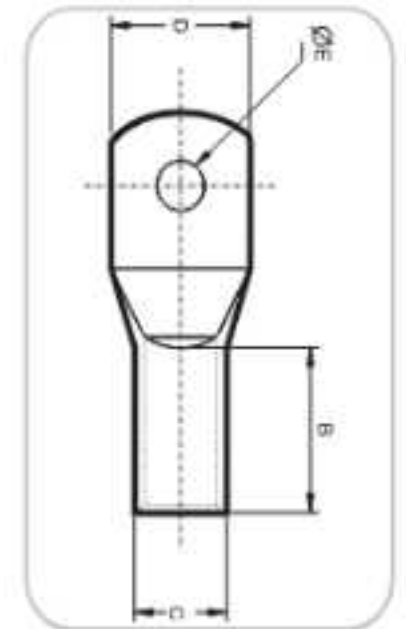
### Certifications



E532633

## | Crimping Type Copper Tubular Cable Terminal Ends

Wire Size	Colour Code	Dimensions in Inches					Product Code
		A	C	D	B	J	
	14.5	9.5	12.4	22	18	54	IT 50 - 14
	17	9.5	12.4	22	18	54	IT 50 - 16
	21	9.5	12.4	26	18	62	IT 50 - 20
70	8.4	11.3	14.6	21	18.5	47	IT 70 - 8
	10.5	11.3	14.6	21	18.5	47	IT 70 - 10/70
	13	11.3	14.6	21	18.5	47	IT 70 - 12
	14.5	11.3	14.6	22	18.5	55	IT 70 - 14
	17	11.3	14.6	26	18.5	56	IT 70 - 16
	21	11.3	14.6	28	18.5	63	IT 70 - 20
95	8.4	13.5	17.4	25	21	53	IT 95 - 8
	10.5	13.5	17.4	25	21	53	IT 95 - 10
	13	13.5	17.4	25	21	53	IT 95 - 12
	14.5	13.5	17.4	25	22	58	IT 95 - 14
	17	13.5	17.4	25	22	59	IT 95 - 16
	21	13.5	17.4	28	22	63	IT 95 - 20
120	8.4	15	19.4	28	23	60	IT 120 - 8
	10.5	15	19.4	28	23	60	IT 120 - 10
	13	15	19.4	28	23	60	IT 120 - 12
	14.5	15	19.4	28	23	60	IT 120 - 14
	17	15	19.4	28	23	65	IT 120 - 16
	21	15	19.4	28	23	65	IT 120 - 20
150	8.4	16.5	21.2	30	27	70	IT 150 - 8
	10.5	16.5	21.2	30	27	70	IT 150 - 10
	13	16.5	21.2	30	27	70	IT 150 - 12
	14.7	16.5	21.2	30	27	70	IT 150 - 14
	17	16.5	21.2	30	27	70	IT 150 - 16
	21	16.5	21.2	30	27	70	IT 150 - 20
185	10.5	18.5	23.5	34	32	80	IT 185 - 10
	13	18.5	23.5	34	32	80	IT 185 - 12
	14.7	18.5	23.5	34	32	80	IT 185 - 14
	17	18.5	23.5	34	32	80	IT 185 - 16
	21	18.5	23.5	34	32	80	IT 185 - 20
240	10.5	21	26.5	38	39	94	IT 240 - 10
	13	21	26.5	38	39	94	IT 240 - 12
	14.7	21	26.5	38	39	94	IT 240 - 14
	17	21	26.5	38	39	94	IT 240 - 16
	21	21	26.5	38	39	94	IT 240 - 20
	BL	21	26.5	38	39	94	IT 240 - BL
300	10.5	23.5	30	43	42	102	IT 300 - 10
	13	23.5	30	43	42	102	IT 300 - 12
	14.7	23.5	30	43	42	102	IT 300 - 14
	17	23.5	30	43	42	102	IT 300 - 16
	21	23.5	30	43	42	102	IT 300 - 20
	BL	23.5	30	43	42	102	IT 300 - BL
400	13	28.5	36.5	52.5	45	112	IT 400 - 12
	14.7	28.5	36.5	52.5	45	112	IT 400 - 14



**Tolerance :** as per UL FUS.

**Material :** E - Copper

**Finish :** Electro Tinned

### Standards

UL 486A-486B

### Certifications



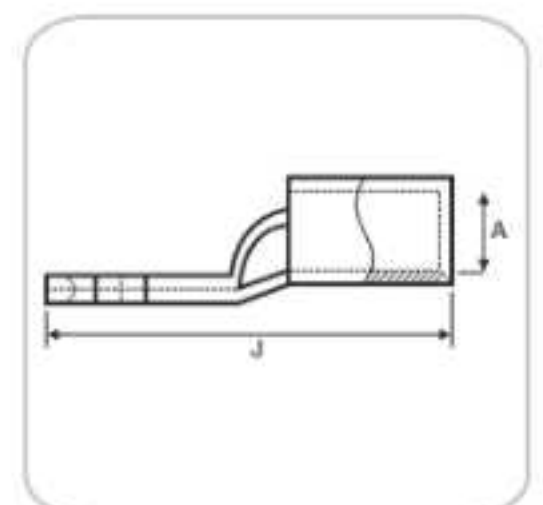
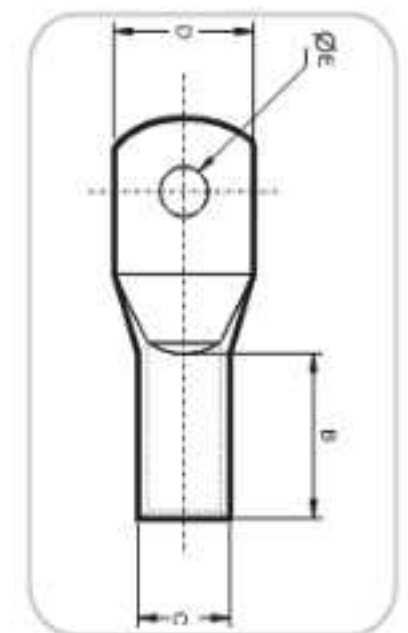
E532633

## Crimping Type Copper Tubular Cable Terminal Ends

### Application

Used for allow accurate position dies during the crimping operation  
Tin plating on the terminlas avoids oxidation and avoid maximum corrosion protection  
High conductivity seamless copper

Cable mm <sup>2</sup>	Stud Hole E	Dimensions in mm					Product Code
		A	C	D	B	J	
	17	23.5	30	43	42	102	IT 300 - 16
	21	23.5	30	43	42	102	IT 300 - 20
	BL	23.5	30	43	42	102	IT 300 - BL
400	13	28.5	36.5	52.5	45	112	IT 400 - 12
	14.7	28.5	36.5	52.5	45	112	IT 400 - 14
	17	28.5	36.5	52.5	45	112	IT 400 - 16
	21	28.5	36.5	52.5	45	112	IT 400 - 20
	BL	28.5	36.5	52.5	45	112	IT 400 - BL
500	14.7	30	39	56	50	121	IT 500 - 14
	17	30	39	56	50	121	IT 500 - 16
	21	30	39	56	50	121	IT 500 - 20
	BL	30	39	56	50	121	IT 500 - BL



### Standards

UL 486A-486B

### Certifications



**Tolerance** : as per UL FUS.

**Material** : E - Copper

**Finish** : Electro Tinned

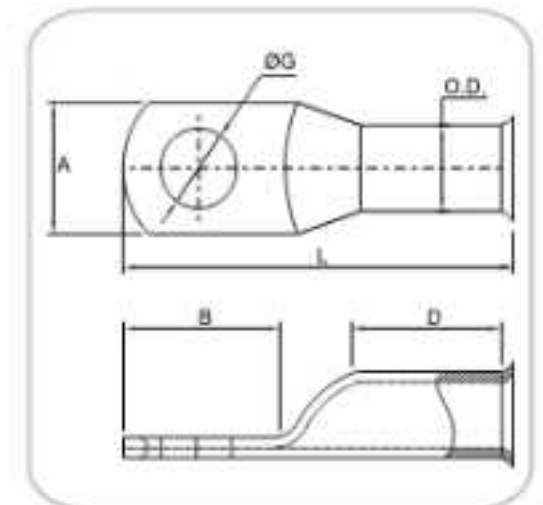


## Copper Standard wall Starter Terminal Ends (Copper compression lugs-Long barrel, One holes)

### Application

Used to various automobile industries and other engineering applications  
Widely demand due to excellent performance, high durability and resistivity  
Perfect for replacing lugs from corrosion or building a new battery cable  
Perfect for general wiring, power, starter and Ground connections.

Wire Size	Bolt Size	Dimensions in Inches						Product Code
		O.D.	A	B	D	G	L	
8	1/4"	6.3	11.58	17.15	13.97	6.4	36.66	IABL-86
8	5/16"	6.35	11.58	17.15	13.97	8.41	36.66	IABL-88
8	3/8"	6.35	14.48	17.15	13.97	10.49	36.66	IABL-810
8	1/2"	6.35	16.26	20.62	13.97	13	42.55	IABL-812
6	1/4"	7.92	13.72	17.78	13.97	6.4	37.29	IABL-66
6	5/16"	7.92	13.72	17.78	13.97	8.41	37.29	IABL-68
6	3/8"	7.92	13.72	17.78	13.97	10.49	37.29	IABL-610
6	1/2"	7.92	16.26	20.82	13.97	13	42.55	IABL-612
4	1/4"	9.04	13.72	20.32	14.73	6.4	40.64	IABL-46
4	5/16"	9.04	13.72	20.32	14.73	8.41	40.64	IABL-48
4	3/8"	9.04	14.48	20.32	14.73	10.49	40.64	IABL-410
4	1/2"	9.04	14.48	20.32	14.73	13	40.64	IABL-412
2	1/4"	10.67	16.51	19.61	17.02	6.4	43.94	IABL-26
2	5/16"	10.67	16.51	19.61	17.02	8.41	43.94	IABL-28
2	3/8"	10.67	16.51	19.61	17.02	10.49	43.94	IABL-210
2	1/2"	10.67	16.51	19.61	17.02	13	43.94	IABL-212
1/0	1/4"	12.65	18.59	21.34	19.3	6.4	48.56	IABL-106
1/0	5/16"	12.65	18.59	21.34	19.3	8.41	48.56	IABL-108
1/0	3/8"	12.65	18.59	21.34	19.3	10.49	48.56	IABL-1010
1/0	1/2"	12.65	18.59	21.34	19.3	13	48.56	IABL-1012
2/0	1/4"	14.22	20.83	24.38	21.59	6.4	55.88	IABL-206
2/0	5/16"	14.22	20.83	24.38	21.29	8.41	55.88	IABL-208
2/0	3/8"	14.22	20.83	24.38	21.29	10.49	55.88	IABL-2010
2/0	1/2"	14.22	20.83	24.38	21.29	13	55.88	IABL-2012
3/0	3/8"	15.62	22.95	25.04	21.45	6.4	57.15	IABL-3010
3/0	1/2"	15.62	22.95	25.04	21.45	13	57.15	IABL-3012
4/0	3/8"	17.63	26.31	28.4	23.11	1.49	65.29	IABL-4010
4/0	1/2"	17.63	26.31	28.4	23.11	13	65.29	IABL-4012



### Standards

UL 486A-486B

### Certifications



E532633

Material : E - Copper

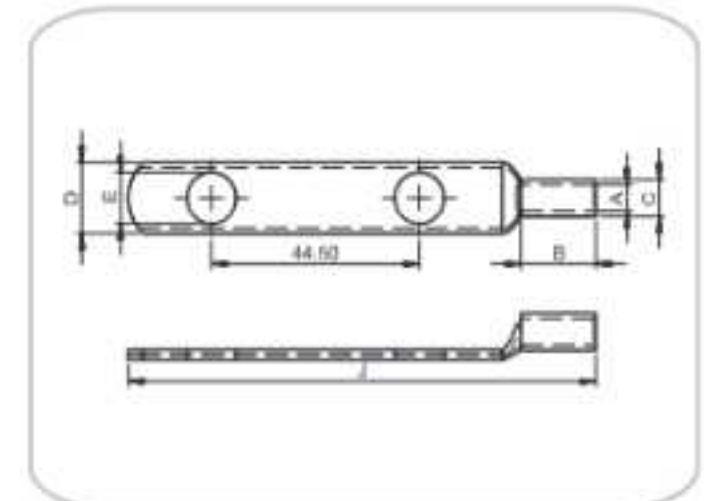
Finish : Copper

## Copper HT lugs with 2 Holes, Long Rounded Palm

Cable Size		Stud Hole E	Dimensions in MM					Product Code
mm <sup>2</sup>	AWG		A	C	D	Strip Length	J	
16	#6	5.2	5.4	7.1	12	16	100	IT 16 2ER-5
		6.5	5.4	7.1	12	16	100	IT 16 2ER-6
		8.4	5.4	7.1	12	16	100	IT 16 2ER-8
		10.5	5.5	7.6	15	16	100	IT 16 2ER-10
		13	5.5	7.6	17	16	100	IT 16 2ER-12
		17	5.5	7.6	21	16	105	IT 16 2ER-16
20	#4	8.4	6	7.7	12	16	100	IT 20 2ER-8
25	#3	6.5	6.8	8.8	13	16	100	IT 25 2ER-6
		8.4	6.8	8.8	13	16	100	IT 25 2ER-8
		10.5	6.8	8.8	15	16	100	IT 25 2ER-10
		13	6.8	9.2	17	16	100	IT 25 2ER-12
		17	6.8	9.2	21	16	105	IT 25 2ER-16
35	#2	6.5	8.2	10.6	15.3	16	100	IT 35 2ER-6
		8.4	8.2	10.6	15.3	16	100	IT 35 2ER-8
		10.5	8.2	10.6	15.3	16	100	IT 35 2ER-10
		13	8.2	10.6	18	16	100	IT 35 2ER-12
		17	8.2	10.6	22	16	105	IT 35 2ER-16
50	1/0 MCM	6.5	9.5	12.4	17.8	25	109	IT 50 2ER-6
		8.4	9.5	12.4	17.8	25	109	IT 50 2ER-8
		10.5	9.5	12.4	17.8	25	109	IT 50 2ER-10
		13	9.5	12.4	20	25	109	IT 50 2ER-12
		13	9.5	12.4	18	25	109	IT 50 2EN-12
		14.5	9.5	12.4	22	25	112	IT 50 2ER-14
		17	9.5	12.4	22	25	114	IT 50 2ER-16
70	2/0 MCM	8.4	11.3	14.6	21	30	114	IT 70 2ER-8
		10.5	11.3	14.6	21	30	114	IT 70 2ER-10
		13	11.3	14.6	21	30	114	IT 70 2ER-12
		14.5	11.3	14.6	22	30	118	IT 70 2ER-14
		17	11.3	14.6	26	30	120	IT 70 2ER-16
95	3/0 MCM	8.4	13.5	17.4	25	30	116	IT 95 2ER-8
		10.5	13.5	17.4	25	30	116	IT 95 2ER-10
		13	13.5	17.4	25	30	116	IT 95 2ER-12
		14.5	13.5	17.4	25	30	118	IT 95 2ER-14
		17	13.5	17.4	25	30	120	IT 95 2ER-16
95	3/0 MCM	8.4	13.5	17.4	25	30	116	IT 95 2ER-8
		10.5	13.5	17.4	25	30	116	IT 95 2ER-10
		13	13.5	17.4	25	30	116	IT 95 2ER-12
		14.5	13.5	17.4	25	30	118	IT 95 2ER-14

### Application

Best suited where two bolts are needed to avoid rotation or movement of lugs  
Longer length barrel permits extra crimps for heavy duty loads  
Flat contacts surface and precise holes



**Tolerance** : as per UL FUS.

**Material** : E - Copper

**Finish** : Electro Tinned

### Standards

UL 486A-486B

### Certifications



E532633

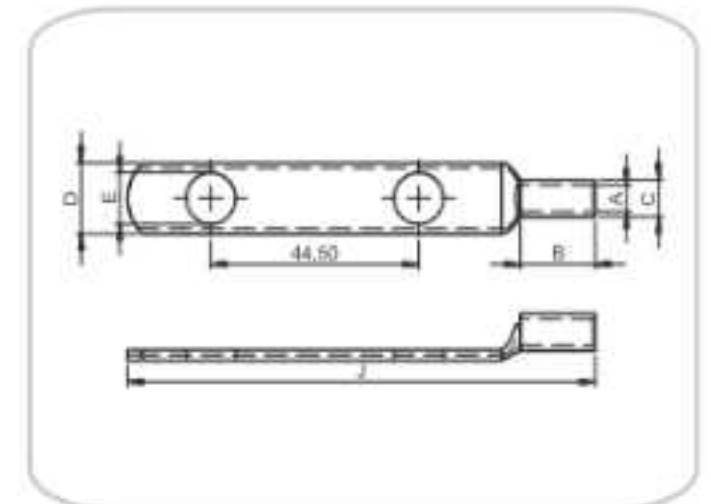
A

## Copper HT lugs with 2 Holes, Long Rounded Palm

Cable Size		Stud Hole E	Dimensions in MM					Product Code
mm <sup>2</sup>	AWG		A	C	D	Strip Length	J	
-	-	17	13.5	17.4	25	30	120	IT 95 2ER-16
-	-	21	13.5	17.4	28	30	127	IT 95 2ER-20
120	44/0 MCM	8.4	15	19.4	28	35	122	IT 120 2ER-8
		10.5	15	19.4	28	35	122	IT 120 2ER-10
		13	15	19.4	28	35	122	IT 120 2ER-12
		14.5	15	19.4	28	35	125	IT 120 2ER-14
		17	15	19.4	28	35	128	IT 120 2ER-16
150	250 MCM	21	15	19.4	28	35	133	IT 120 2ER-20
		8.4	16.5	21.2	30	40	126	IT 150 2ER-8
		10.5	16.5	21.2	30	40	126	IT 150 2ER-10
		13	16.5	21.2	30	40	126	IT 150 2ER-12
		14.7	16.5	21.2	30	40	132	IT 150 2ER-14
185	350 MCM	17	16.5	21.2	30	40	134	IT 150 2ER-16
		21	16.5	21.2	30	40	139	IT 150 2ER-20
		10.5	18.5	23.5	34	42	132	IT 185 2ER-10
		13	18.5	23.5	34	42	132	IT 185 2ER-12
		14.7	18.5	23.5	34	42	135	IT 185 2ER-14
240	500 MCM	17	18.5	23.5	34	42	137	IT 185 2ER-16
		21	18.5	23.5	34	42	142	IT 185 2ER-20
		10.5	21	26.5	38	50	143	IT 240 2ER-10
		13	21	26.5	38	50	143	IT 240 2ER-12
		14.7	21	26.5	38	50	145	IT 240 2ER-14
300	600 MCM	17	21	26.5	38	50	147	IT 240 2ER-16
		21	21	26.5	38	50	152	IT 240 2ER-20
		BL	21	26.5	38	50	143	IT 240 2ER-BL
		10.5	23.5	30	43	55	144	IT 300 2ER-10
		13	23.5	30	43	55	144	IT 300 2ER-12
400	750 MCM	14.7	23.5	30	43	55	151	IT 300 2ER-14
		17	23.5	30	43	55	153	IT 300 2ER-16
		21	23.5	30	43	55	158	IT 300 2ER-20
		BL	23.5	30	43	55	144	IT 300 2ER-BL
		13	28.5	36.5	52.5	60	149	IT 400 2ER-12
500	1000 MCM	14.7	28.5	36.5	52.5	60	158	IT 400 2ER-14
		17	28.5	36.5	52.5	60	160	IT 400 2ER-16
		21	28.5	36.5	52.5	60	165	IT 400 2ER-20
		BL	28.5	36.5	52.5	60	149	IT 400 2ER-BL
		13	30	39	56	65	160	IT 500 2ER-12
500	1000 MCM	14.7	30	39	56	65	163	IT 500 2ER-14
		17	30	39	56	65	165	IT 500 2ER-16
		21	30	39	56	65	170	IT 500 2ER-20
		BL	30	39	56	65	160	IT 500 2ER-BL

### Application

Best suited where two bolts are needed to avoid rotation or movement of lugs  
Longer length barrel permits extra crimps for heavy duty loads  
Flat contacts surface and precise holes



**Tolerance** : as per UL FUS.

**Material** : E - Copper

**Finish** : Electro Tinned

### Standards

UL 486A-486B

### Certifications



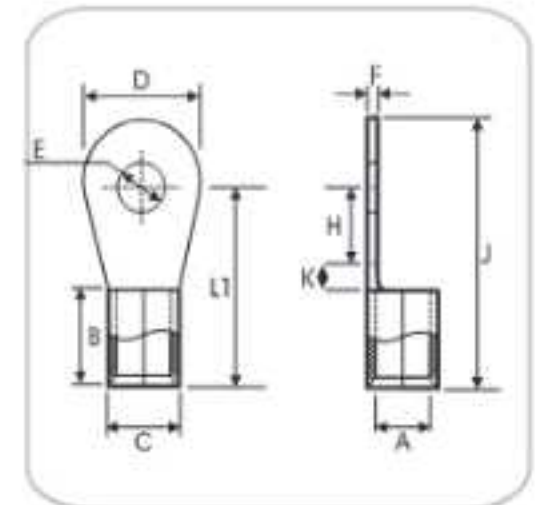
E532633

## Tinned Copper Ring Type Cable Terminal Ends

Cable Size		Dimensions in MM									Product Code
mm <sup>2</sup>	AWG	A	C	D	F	B	K	H	L1	J	
1.5	3.2	1.6	3.2	6.8	0.8	5	1	3.6	9.6	13	IR 7153
	3.7	1.6	3.2	6.8	0.8	5	1	3.6	9.6	13	IR 7048
	4.2	1.6	3.2	6.8	0.8	5	1	3.6	9.6	13	IR 7049
	2.2	1.6	3.2	6	0.8	5	2	4	11	14	IR 7103
	2.6	1.6	3.2	6	0.8	5	2	4	11	14	IR 7000
	3.2	1.6	3.2	6	0.8	5	2	4	11	14	IR 7001
	3.7	1.6	3.2	6	0.8	5	2	4	11	14	IR 7002
	4.2	1.6	3.2	6	0.8	5	2	4	11	14	IR 7003
	4.2	1.6	3.2	7	0.8	5	1	5	11	14.5	IR 7154
	3.2	1.6	3.2	8	0.8	5	2	5	12	16	IR 7104
	4.2	1.6	3.2	8	0.8	5	2	5	12	16	IR 7004
	5.2	1.6	3.2	8	0.8	5	2	5	12	16	IR 7005
	4.2	1.6	3.2	10	0.8	5	2	6	13	18	IR 7105
	5.2	1.6	3.2	10	0.8	5	2	6	13	18	IR 7006
	6.4	1.6	3.2	10	0.8	5	2	6	13	18	IR 7007
	6.4	1.6	3.2	12	0.8	5	1	6	12	18	IR 7106
2.5	3.2	2.3	3.9	6.5	0.8	5	1	3.5	9.5	12.7	IR 7107
	3.7	2.3	3.9	6.5	0.8	5	1	3.5	9.5	12.7	IR 7008
	3.7	2.3	3.9	8	0.8	5	2	5	12	16	IR 7108
	4.2	2.3	3.9	8	0.8	5	2	5	12	16	IR 7009
	5.2	2.3	3.9	8	0.8	5	2	5	12	16	IR 7010
	5.2	2.3	3.9	10	0.8	5	1	7	13	18	IR 7109
	6.4	2.3	3.9	10	0.8	5	1	7	13	18	IR 7011
	5.2	2.3	3.9	12	0.8	5	2	9	16	22	IR 7110
	6.4	2.3	3.9	12	0.8	5	2	9	16	22	IR 7012
	8.2	2.3	3.9	12	0.8	5	2	9	16	22	IR 7013
	6.4	2.3	3.9	16	0.8	5	2	10	17	25	IR 7111
	8.2	2.3	3.9	16	0.8	5	2	10	17	25	IR 7014
	10.2	2.3	3.9	16	0.8	5	2	10	17	25	IR 7015
	10.2	2.3	3.9	18	0.8	5	1	14	20	29	IR 7151
	12.7	2.3	3.9	18	0.8	5	1	14	20	29	IR 7047
04-Jun	4.2	3.5	5.5	8	1	6	2	5	13	17	IR 7155
	5.2	3.5	5.5	8	1	6	2	5	13	17	IR 7050
	4.2	3.5	5.5	10	1	6	3	5	14	19	IR 7112
	5.2	3.5	5.5	10	1	6	3	5	14	19	IR 7016
	5.2	3.5	5.5	12	1	6	2	6	14	20	IR 7113
	6.4	3.5	5.5	12	1	6	2	6	14	20	IR 7017
	8.2	3.5	5.5	12	1	6	2	6	14	20	IR 7018
	5.2	3.5	5.5	12	1	6	3	7	16	22	IR 7114
	6.4	3.5	5.5	12	1	6	3	7	16	22	IR 7019
	5.2	3.5	5.5	8	1	6	3	9.8	18.8	22.8	IR 7157
	6.4	3.5	5.5	14	1	6	2	10.5	18.5	25.5	IR 7115
	8.2	3.5	5.5	14	1	6	2	10.5	18.5	25.5	IR 7020
	9.7	3.5	5.5	14	1	6	2	10.5	18.5	25.5	IR 7021
	8.2	3.5	5.5	16	1	6	3	13	22	30	IR 7116

### Application

Use to Tool Crimp, Wire Termination, Wire Extension and In Compact spaces



**Tolerance** : as per UL FUS.

**Material** : E - Copper

**Finish** : Electro Tinned

### Standards

UL 486A-486B

### Certifications



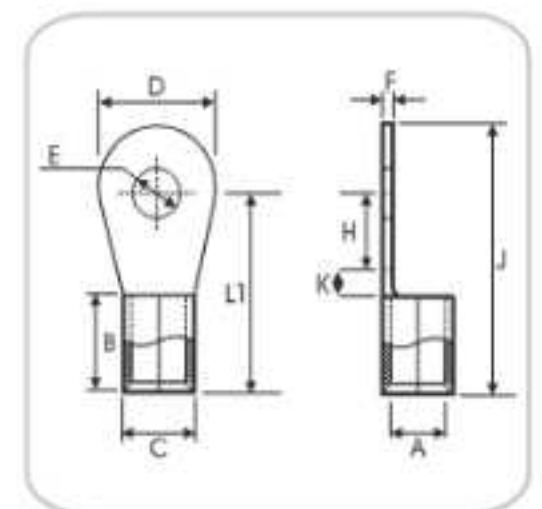
E532633

## Tinned Copper Ring Type Cable Terminal Ends

Cable mm <sup>2</sup>	Stud Hole E	Dimensions in MM									Product Code
		A	C	D	F	B	K	H	L1	J	
10	10.2	3.5	5.5	16	1	6	3	13	22	30	IR 7022
	8.2	3.5	5.5	18	1	6	3	12	21	30	IR 7117
	10.2	3.5	5.5	18	1	6	3	12	21	30	IR 7023
	12.7	3.5	5.5	18	1	6	3	12	21	30	IR 7024
	4.2	4.3	6.3	10	1	8	2	7	17	22	IR 7118
	5.2	4.3	6.3	10	1	8	2	7	17	22	IR 7025
	4.2	4.3	6.3	10	1	8	3	4	15	20	IR 7119
	5.2	4.3	6.3	10	1	8	3	4	15	20	IR 7026
	6.4	4.3	6.3	12	1	8	2	7	17	23	IR 7120
	8.2	4.3	6.3	16	1	8	4	7	19	27	IR 7121
	8.2	4.3	6.3	18	1	8	4	9	21	30	IR 7122
	10.2	4.3	6.3	18	1	8	4	9	21	30	IR 7027
	10.2	4.3	6.3	22	1	8	5	10	23	34	IR 7123
12.7	4.3	6.3	22	1	8	5	10	23	34	IR 7028	
16	5.2	5.6	8	10	1.2	10	3	6	19	24	IR 7124
	5.2	5.6	8	12	1.2	10	4	6	20	26	IR 7125
	6.4	5.6	8	12	1.2	10	4	6	20	26	IR 7029
	6.4	5.6	8	16	1.2	10	4	8	22	30	IR 7126
	8.2	5.6	8	16	1.2	10	4	8	22	30	IR 7030
	9.7	5.6	8	16	1.2	10	4	8	22	30	IR 7031
	8.2	5.6	8	18	1.2	10	4	10	24	33	IR 7127
	10.2	5.6	8	18	1.2	10	4	10	24	33	IR 7032
	10.2	5.6	8	22	1.2	10	6	8	24	35	IR 7128
	12.7	5.6	8	22	1.2	10	6	8	24	35	IR 7033
25	6.4	7.5	11.1	12	1.8	11	4	10	25	31	IR 7156
	8.2	7.5	11.1	12	1.8	11	4	10	25	31	IR 7051
	6.4	7.5	11.1	16	1.8	11	5	6	22	30	IR 7129
	8.2	7.5	11.1	16	1.8	11	5	6	22	30	IR 7034
	10.2	7.5	11.1	16	1.8	11	5	6	22	30	IR 7035
	6.4	7.5	11.1	16	1.8	11	4	10	25	33	IR 7130
	8.2	7.5	11.1	16	1.8	11	4	10	25	33	IR 7036
	10.2	7.5	11.1	18	1.8	11	5	9	25	34	IR 7131
	10.2	7.5	11.1	22	1.8	11	6	14	31	42	IR 7132
	12.7	7.5	11.1	22	1.8	11	6	14	31	42	IR 7037
35	6.4	9	12.6	16	1.8	12	5	6	23	31	IR 7133
	8.2	9	12.6	16	1.8	12	5	6	23	31	IR 7038
	8.2	9	12.6	18	1.8	12	5	10	27	36	IR 7134
	10.2	9	12.6	18	1.8	12	5	10	27	36	IR 7039
	10.2	9	12.6	22	1.8	12	4	15	31	42	IR 7135
	12.7	9	12.6	22	1.8	12	4	15	31	42	IR 7040
50	8.2	10.5	14.1	18	1.8	16	6	12	34	43	IR 7136
	10.2	10.5	14.1	18	1.8	16	6	12	34	43	IR 7041
	10.2	10.5	14.1	22	1.8	16	7	9	32	43	IR 7137
	10.2	10.5	14.1	24	1.8	16	6	14	36	48	IR 7138
	12.7	10.5	14.1	24	1.8	16	6	14	36	48	IR 7042
16.2	10.5	14.1	32	1.8	16	7	15	38	54	IR 7139	

### Application

Use to Tool Crimp, Wire Termination, Wire Extension and In Compact spaces



**Tolerance** : as per UL FUS.

**Material** : E - Copper

**Finish** : Electro Tinned

### Standards

UL 486A-486B

### Certifications



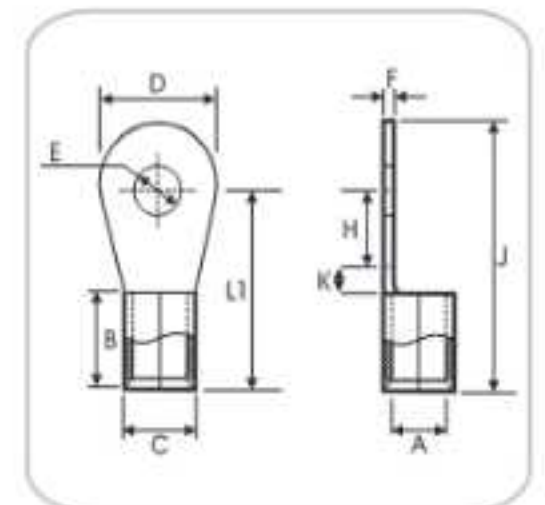
E532633

## Tinned Copper Ring Type Cable Terminal Ends

### Application

Use to Tool Crimp, Wire Termination, Wire Extension and In Compact spaces

Cable mm <sup>2</sup>	Stud Hole E	Dimensions in MM									Product Code
		A	C	D	F	B	K	H	L1	J	
70	10.2	12	16	22	2	18	7	11	36	47	IR 7140
	12.7	12	16	22	2	18	7	11	36	47	IR 7043
	12.7	12	16	24	2	18	8	10	36	48	IR 7141
95	16.2	12	16	28	2	18	6	16	40	54	IR 7142
	10.2	13.5	18.1	22	2.3	20	5	10	35	46	IR 7143
	10.2	13.5	18.1	24	2.3	20	6	12	38	50	IR 7144
120	12.7	13.5	18.1	24	2.3	20	6	12	38	50	IR 7044
	16.2	13.5	18.1	28	2.3	20	7	17	44	58	IR 7145
	12.7	15	20.2	26	2.6	22	10	7	39	52	IR 7146
150	23	15	20.2	40	2.6	22	10	20	52	72	IR 7148
	12.7	16.5	23.7	34	3.6	24	9	16	49	66	IR 7149
	16.2	16.5	23.7	34	3.6	24	9	16	49	66	IR 7045
	16.2	16.5	23.7	40	3.6	24	10	20	54	74	IR 7150
	20.3	16.5	23.7	40	3.6	24	10	20	54	74	IR 7046



Tolerance : as per UL FUS.

Material : E - Copper

Finish : Electro Tinned

### Standards

UL 486A-486B

### Certifications



E532633

## Butt Splice Connector

### Copper Compression sleeves- Long Barrel

#### Application

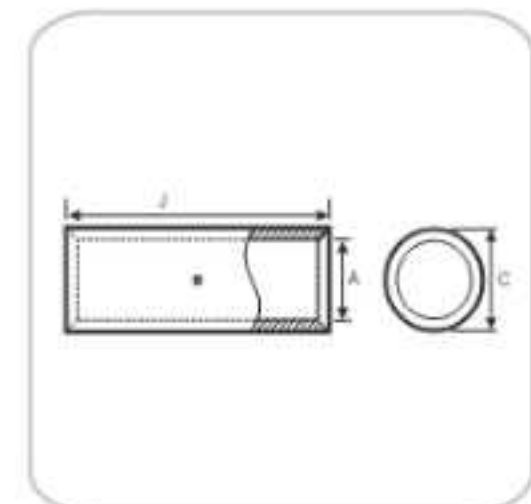
*Suitable for use at voltages up to 35 kV provided connector is properly installed to cable manufacturer voltage stress relief instructions*

*5 kV is the maximum voltage in all bare splices*

*Tin plated to provide corrosion resistance*

*Marked with die index and color coded*

Cable mm <sup>2</sup>	Dimensions in MM			Product Code
	A	C	J	
1.5	1.8	3.7	12	IL 1.5
2.5	2.4	4	15	IL 2.5
4	3.1	4.8	15	IL 4
6	3.8	5.5	15	IL 6
10	4.5	6.2	20	IL 10
16	5.4	7.1	20	IL 16
20	6.3	7.7	22	IL 20
25	6.8	8.8	32	IL 25
35	8.2	10.6	36	IL 35
50	9.5	12.4	40	IL 50
70	11.3	14.6	45	IL 70
95	13.5	17.4	45	IL 95
120	15	19.4	50	IL 120
150	16.5	21.2	55	IL 150
185	18.5	23.5	60	IL 185
240	21	26.5	80	IL 240
300	23.5	30	85	IL 300
400	28.5	36.5	85	IL 400
500	30	39	100	IL 500



#### Standards

UL 486A-486B

#### Certifications

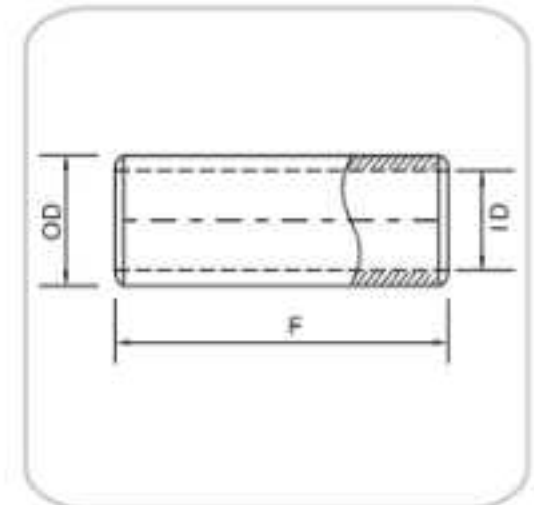


E532633

Tolerance : as per UL FUS.

## Copper compression Sleeves, Short Barrel

Wire Size	Colour	Dimensions in Inches			Product Code
		F	OD	ID	
8	RED	1.125	0.281	0.172	ICT-8
6	BLUE	1.75	0.297	0.203	ICT-6
4	GRAY	1.875	0.344	0.25	ICT-4
3	WHITE	1.75	0.375	0.281	ICT-3
2	BROWN	1.875	0.422	0.313	ICT-2
1	GREEN	1.875	0.469	0.359	ICT-1
1/0	PINK	1.875	0.516	0.391	ICT-1/0
2/0	BLACK	2	0.563	0.428	ICT-2/0
3/0	ORANGE	2.125	0.609	0.484	ICT-3/0
4/0	PURPLE	2.125	0.688	0.547	ICT-4/0
300MCM	WHITE	2.25	0.813	0.656	ICT-300
350MCM	RED	2.375	0.875	0.688	ICT-350
400MCM	BLUE	2.5	0.938	0.75	ICT-400
500MCM	BROWN	2.875	1.063	0.828	ICT-500
600MCM	GREEN	2.875	1.188	0.922	CT-600



Tolerance : as per UL FUS.

### Standards

UL 486A-486B

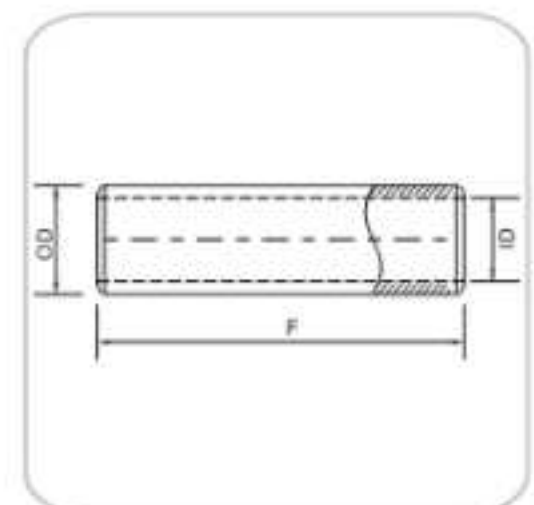
### Certifications



E532633

## Copper compression Sleeves, Long Barrel

Wire Size	Colour	Dimensions in Inches			Product Code
		F	OD	ID	
8	RED	1.75	0.281	0.172	ICTL-8
6	BLUE	2.38	0.297	0.203	ICTL-6
4	GRAY	2.38	0.344	0.25	ICTL-4
3	WHITE	2.38	0.375	0.281	ICTL-3
2	BROWN	2.63	0.422	0.312	ICTL-2
1	GREEN	2.88	0.469	0.359	ICTL-1
1/0	PINK	2.88	0.516	0.391	ICTL-1/0
2/0	BLACK	3.13	0.562	0.438	ICTL-2/0
3/0	ORANGE	3.13	0.609	0.484	ICTL-3/0
4/0	PURPLE	3.38	0.687	0.547	ICTL-4/0
300MCM	WHITE	4.13	0.813	0.656	ICTL-300
400MCM	BLUE	4.38	0.937	0.75	ICTL-400
500MCM	BROWN	4.63	1.063	0.828	ICTL-500
600MCM	GREEN	4.63	1.188	0.922	ICTL-600



Tolerance : as per UL FUS.

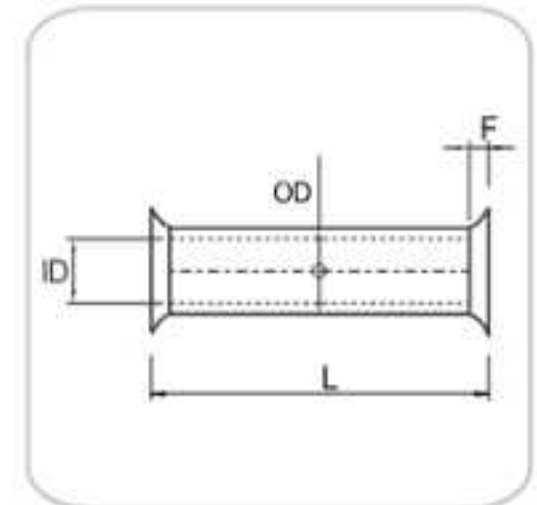


## Butt Connector

### Application

Non-Insulated Butt Connectors are terminals that are used to mate, connect, or terminate a single wire. Best suited when special performance or installation characteristics are not needed. Non-insulated butt connectors popular terminals used in applications that utilizes wire to transfer electrical current. Can be crimped anywhere on the barrel surface.

Wire Size	Dimensions in mm				Product Code
	F	OD	L	F	
8	4.72	6.35	27.94	2.54	IBC - T8
6	5.89	7.92	29.21	2.54	IBC - T6
4	7.14	9.04	30.99	2.54	IBC - T3
2	8.43	10.67	34.04	2.54	IBC - T2
1	8.94	11.18	34.04	2.54	IBC - T1
1/0	10.19	12.65	39.62	2.54	IBC - T11
2/0	11.58	14.22	45.97	2.54	IBC - T12
3/0	12.93	15.62	48.26	2.54	IBC - T13
4/0	14.94	17.63	62.48	2.54	IBC - T14



**Tolerance :** as per UL FUS.

**Material :** E - Copper

**Finish :** Copper

### Standards

UL 486A-486B

### Certifications



E532633

## Copper One hole offset tang Terminal Connectors

### Application

*One hole mount application*

*Range taking to reduce inventory*

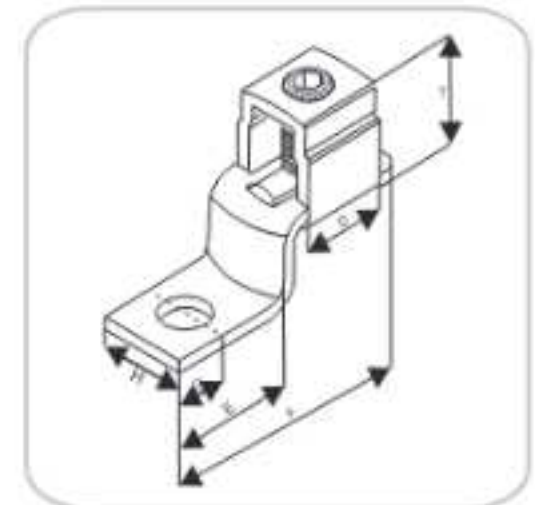
*Re-usable for efficient use and flexibility in the field*

*Rated 600V/90°C*

*Conductors are wedged between arched pressure bar and collar establishing positive contact and firm permanent grip with the v-bottom collar*

*The lugs are bright dipped plated to ensure reliable connection for copper conductors*

Copper Wire Range (AWG)	Screw Size	Screw Type	Dimensions in mm						Product Code
			F	E	D	G	H	T	
#14 - #10	48 A	SCREW-1	26	12	7	5.3	7.95	9.5	IUL-25
#14 - #6	1/4" UNF	SCREW-2	31.5	15	11	5.6	10	12.3	IUL-35
#8 - #2	5/16" UNF	SCREW-2	39.5	20.5	12.7	6.35	12	16.3	IUL-70
#6 - #1/0	3/8" UNF	SCREW-2	50.18	26.16	15.35	10.63	15.93	23.05	IUL-125
#4 - #3/0	3/8" UNF	SCREW-3	55.67	29.85	18.17	10.87	19.17	26.36	IUL-175
#2 - #4/0	7/16" UNF	SCREW-3	64.86	33.57	23.94	12.78	25.25	29.68	IUL-225
#1/0 - 350	5/8" UNF	SCREW-3	71.68	33.55	30.85	12.97	25.25	35.65	IUL-300
#1/0 - 500	5/8" UNF	SCREW-3	103.78	56.28	36.15	22.95	38.05	40.75	IUL-400
600 - 1000	3/4" UNF	SCREW-3	122.75	60.87	47.15	28.37	49.86	59.05	IUL-650



Steel Screws : Zinc Plated

### Standards

UL 486A-486B  
CSA 22.2 No. 65-13

### Certifications



(A) - UL Listed wire combinations: (2) #10, (2) #12, (2) #14, (1) #12 and (1) #14, (1) #10 and (1) #12

(B) - UL Listed wire combinations: (1) #8 and (1) #4, (1) #8 and (1) #6 (2) #4, (3) #8, (3) #6, (2) #8 and (1) #4, (2) #8 and (1) #6, (1) #6 and (1) #4, (2) #6

## 'C' Crimp Connectors - Compression Type

### Application

These "C" Crimp Connectors are used for tap and Parallel connection of stranded copper cable in earthing application and are ideal for making permanent joints where periodic disconnection is not required.

Cable Size mm <sup>2</sup>	Dimension in mm			Per Box	Part No.
	A	B	L		
25 - 25	20.6	12	21	10	CC025
35 - 35	26.4	15.4	21	10	CC035
50 - 50	34	21.2	28	10	CC050
70 - 70	31	19.8	28	10	CC070
95 - 95	40	25.5	29	10	CC095
120 - 120	44	27	31	10	CC120
150 - 150	44.5	29.7	35	10	CC150
185 - 185	51.8	30		10	CC185
240 - 240	57.7	33.6	35	10	CC240
16-35 / 50-70	33.4	21	23	10	CC1635
25-50 / 70-95	40.8	26	28	10	CC2550



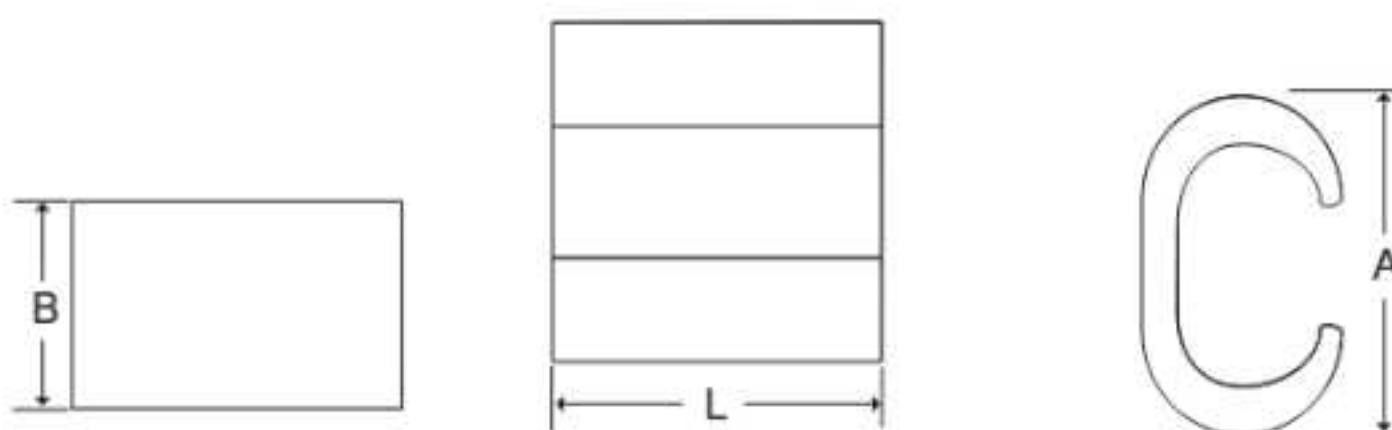
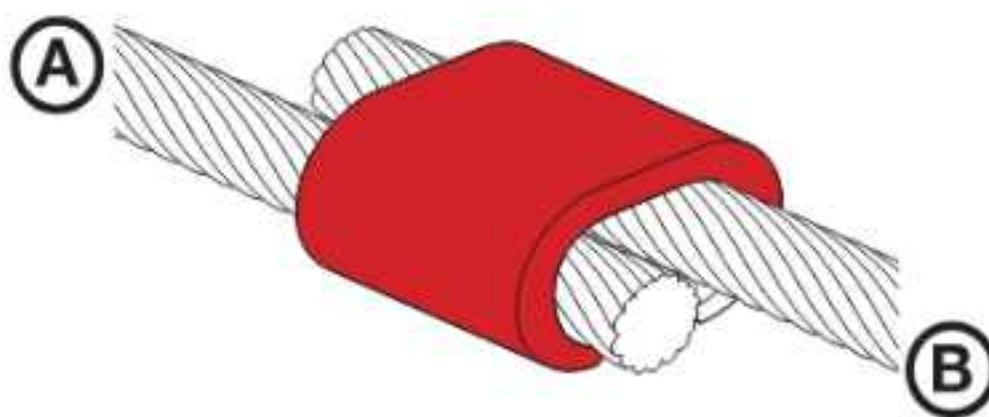
Material : Copper Extruded Section



Tightening torque Nm

**Finish :** Electro-Tinned / Untinned or Copper Plated

**Note :** For copper plated add suffix "C", for Tin Plated add Suffix "T"



## Mechanical Lugs Single - Aluminum

### Application

Suitable for use in circuits rated 35KV or less, proper high voltage spacing and insulation techniques must be used  
Rated to 90° C

Bolt Size	Wire Range Min. - Max	Weight/Case	Per Box	Part No.
1/4"	#14 - #6			ILA23
1/4"	#14 - #2			ILA24
1/4"	#14 - 1/0			ILA25
1/4"	#14 - 2/0			ILA26
5/16"	#6 - 4/0			ILA27
5/16"	#6 - 300 MCM			ILA28
5/16"	#6 - 350 MCM			ILA29
5/16"	#4 - 500 MCM			ILA30
3/8"	#9 - 600 MCM			ILA31
3/8"	350 MCM - 800 MCM			ILA32



Body - Aluminum  
Bolts - Aluminum, SS 304



Tightening torque 40 LBF-INCH



## Mechanical Lugs Double - Dual Rated - Aluminum

Bolt Size	Wire Range Min. - Max	Weight/Case	Per Box	Part No.
7/16"	#14 - 1/0			ILA33
7/16"	#14 - 2/0			ILA34
5/8"	#6 - 250 MCM			ILA35
11/16"	#6 - 350 MCM			ILA36
7/8"	#2 - 600 MCM			ILA37
7/8"	300 MCM - 800 MCM			ILA38
7/8"	1000 MCM - 500 MCM			ILA39



Body - Aluminum  
Bolts - Aluminum, SS 304



Tightening torque 40 LBF-INCH




## Lay-In Lugs Dual Rated - Aluminum


### Application

Used to bond wires and surfaces for grounding applications

Lay-in option allows quick and easy installation even after conductors are run.

Bolt Size	Wire Range Min. - Max	Weight/Case	Per Box	Part No.
1/4"	#14 - #4	6	250	IL4
1/4"	#14 - 1/0	7	100	IL14
5/16"	6 - 250 MCM	10	50	IL6


 Body - Aluminum  
Bolts - Zinc Plated Steel


 Tightening torque 50 LBF-IN.



## Solar Lay - In Lugs Dual Rated

Bolt Size	Wire Range Min. - Max	Weight/Case	Per Box	Part No.
1/4" - 20	#14 - #4	56	100	IL20

 Body - Copper  
Bolts - SS 304


 Tightening torque 50 LBF-IN.




Suffix "TP" is tin plated

## Single Hole Copper Solderless Lugs

Bolt Size	Wire Range Min. - Max	Weight/Case	Per Box	Part No.
1/4"	#14 - #8 STR/SOL	6	250	IL14
5/16"	#14 - STR/SOL	7	100	IL15

 Body - Aluminum  
Bolts - Zinc Plated Steel

 Tightening torque 50 LBF-IN.



## Copper Alloy Split bolts Connectors

### Application

**Type SB** is for use with two conductors in electrical power applications; 2 conductors or conductor to rebar in grounding/ bonding and direct burial applications in earth and concrete **MECHANICAL CONNECTORS**

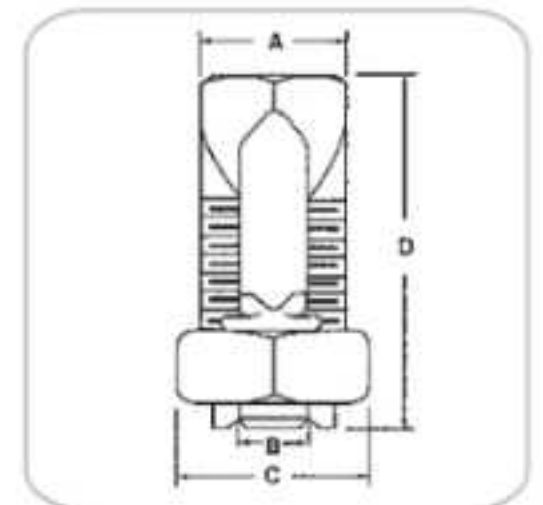
### Installation:

Use with torque wrench, standard socket, box or open-end wrenches  
Reusable with proper installation practice

### High Quality Design

True hex design allows easy installation with standard tooling  
Under torque, this design provides high contact pressure between conductors or conductor to rebar  
Pressure bar design features give assurance of high "pull-out" and secure connection on all combinations of conductors

Part Number	Wire Range		Dimensions (inch.)					Recommended Torque ( In.lbf.)
	Range of Equal Main and Tap	Main Tap with one Max Main	A	B	C	D	THREAD	
ISB-10	16 STR-10 STR	16 STR	0.34	0.125	0.50	0.72	5/16"-2 UNF	80
ISB-8	16 STR-8 STR	16 STR	0.38	0.150	0.50	0.85	3/8"-24 UNF	80
ISB-6	10 SOL-6 SOL	16 SOL	0.50	0.165	0.63	1.05	7/16"-20 UNF	80
ISB-4	8 SOL-4 SOL	16 SOL	0.56	0.215	0.69	1.05	1/2"-20 UNF	165
ISB-3	6 SOL-2 SOL	12 SOL	0.69	0.328	0.82	1.32	5/8"-18 UNF	275
ISB-2	6 SOL-2 STR	14 STR	0.69	0.328	0.82	1.32	5/8"-18 UNF	275
ISB-1/0	4 SOL-1/0 STR	14 SOL	0.75	0.377	0.88	1.64	11/16"-16 UNF	385
ISB-2/0	2 SOL-2/0 STR	14 STR	0.82	0.420	0.99	1.81	3/4"-16 UNF	385
ISB-3/0	2 SOL-3/0 STR	12 SOL	1.06	0.472	1.19	2.00	15/16"-16 UNF	500
ISB-250	1/0 SOL-250 kcmil	10 SOL	1.13	0.580	1.31	2.09	1-14" UNS	650
ISB-350	4/0 STR-350 kcmil	8 SOL	1.50	0.745	1.63	2.63	1-5/16"-12 UN	650
ISB-500	250 kcmil-500 kcmil	8 SOL	1.63	0.830	1.81	3.00	1-7/16"-12 UN	825



### Standards:

UL 467

CSA C22.2 No. 41;22

### Certifications:

**"This is Under cULus testing and it will complete soon"**

## Tin Plated Copper Split bolts Connectors

### Application

**Type SW** For use with copper conductor types: Solid, Compact, Compressed, Concentric Suitable for use in circuits rated 35KV or less, proper high voltage spacing and insulation techniques must be used

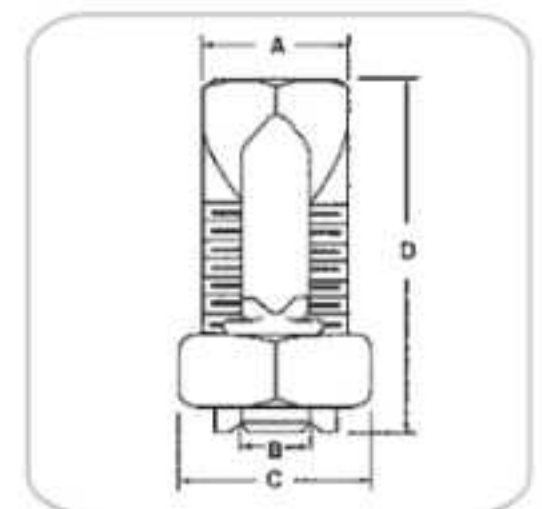
### Installation:

Use with torque wrench, standard socket, box or open-end wrenches Reusable with proper installation practice

### High Quality Design

True hex design allows easy installation with standard tooling Under torque, this design provides high contact pressure between conductors or conductor to rebar Pressure bar design features give assurance of high "pull-out" and secure connection on all combinations of conductors

Part Number	Wire Range		Dimensions (Inch.)					Recommended Torque ( In.lbf.)
	Range of Equal Main and Tap	Main Tap with one Max Main	A	B	C	D	THREAD	
ISW-1	16 STR-10 STR	16 STR	0.34	0.125	0.50	0.72	5/16"-2 UNF	80
ISW-2	16 STR-8 STR	16 STR	0.38	0.150	0.50	0.85	3/8"-24 UNF	80
ISW-3	14 STR- 8 STR	14 SOL	0.50	0.165	0.63	1.05	7/16"-20 UNF	80
ISW-4	10 STR-6 STR	10 SOL	0.56	0.215	0.69	1.05	1/2"-20 UNF	165
ISW-5	8 SOL-2 SOL	8 SOL	0.69	0.328	0.82	1.32	5/8"-18 UNF	275
ISW-6	8 SOL-2 STR	8 SOL	0.69	0.328	0.82	1.32	5/8"-18 UNF	275
ISW-10	6 SOL-1/0 STR	10 SOL	0.75	0.377	0.88	1.64	11/16"-16 UNF	385
ISW-20	6 STR-2/0 STR	10 SOL	0.82	0.420	0.99	1.81	3/4"-16 UNF	385
ISW-30	6 STR-3/0 STR	6 SOL	1.06	0.472	1.19	2.00	15/16"-16 UNF	500
ISW-25	4 STR-250 kcmil	4 STR	1.13	0.580	1.31	2.09	1-14" UNS	650
ISW-35	3/0 STR-350 kcmil	1 SOL	1.50	0.745	1.63	2.63	1-5/16"-12 UN	650
ISW-50	3/0 STR-500 kcmil	1/0 STR	1.63	0.830	1.81	3.00	1-7/16"-12 UN	825



### Standards:

UL 486A-486B

CSA 22.2 No. 65-13

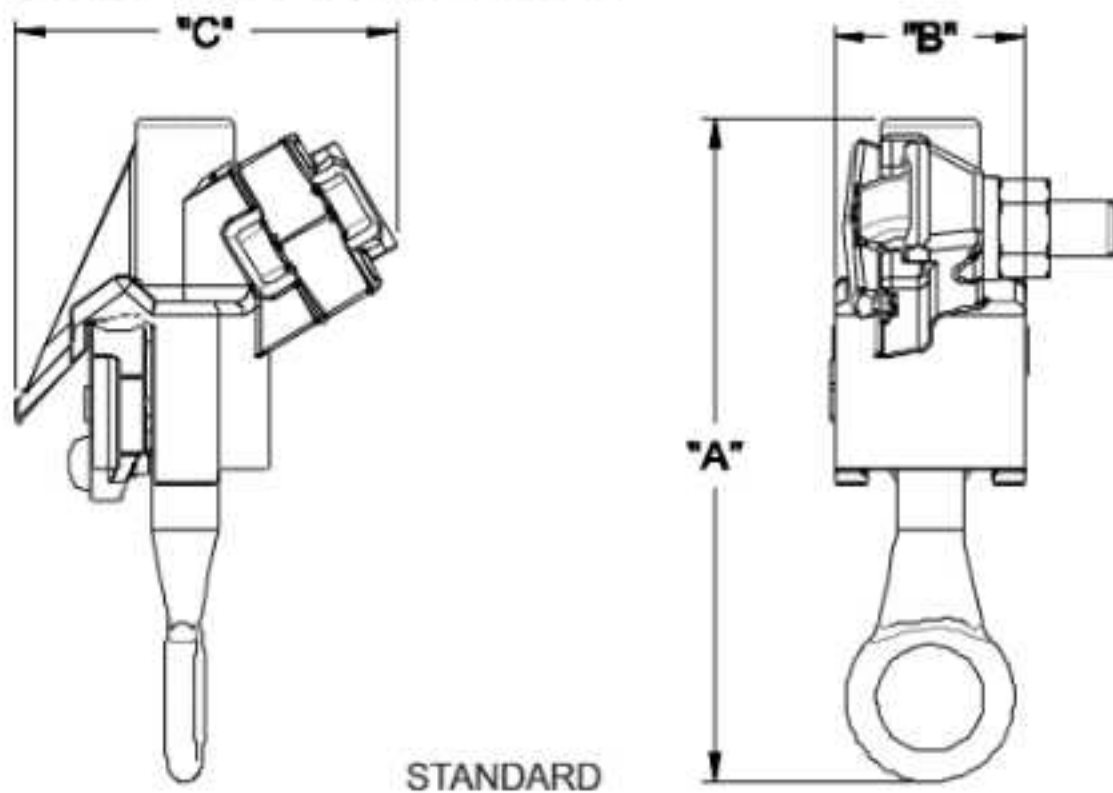
### Certifications:

**" This is Under cULus testing and it will complete soon"**

## Bronze Hot line Clamps

### Application




Hot Line Clamps are designed for installing or removing distribution tap connections with standard hot line tools and equipment



### Key Features

- » Tested per ANSI C119.4
- » Extended jaw for greater conductor contact.
- Copper alloy castings offer high strength and corrosion resistance.

Description	Conductor Range		Dimensions Information			Weight/Case	Per Box	Part No.
	Main	Tap	A	B	C			
Bronze Hot Line Clamp #8-2/0	#8 Solid - 2/0 Stranded .125" - .414"	#8 Solid - 2/0 Stranded .125" - .414"	4-5/16"	1-1/4"	2-1/2"	----	25	IHL20
Bronze Hot Line Clamp #8-2/0 - Tin Plated	#8 Solid - 2/0 Stranded .125" - .414"	#8 Solid - 2/0 Stranded .125" - .414"	4-5/16"	1-1/4"	2-1/2"	----	25	IHL20T
Bronze Hot Line Clamp #6-400MCM	#6 Solid - 4/0 Stranded .162" - .547"	#6 Solid - 4/0 Stranded .162" - .547"	7-1/4"	1-1/4"	2-13/16"	----	25	IHL30
Bronze Hot Line Clamp #6-400MCM - Tin Plated	#6 Solid - 4/0 Stranded .162" - .547"	#6 Solid - 4/0 Stranded .162" - .547"	7-1/4"	1-1/4"	2-13/16"	----	25	IHL30T
Bronze Hot Line Clamp 4/0-800	#4/0 - 800 MCM .502" - 1.031"	#4 - 350	6-5/8"	4-7/8"	2-13/16"	----	25	IHL40
Bronze Hot Line Clamp 4/0-800 - Tin Plated	#4/0 - 800 MCM .502" - 1.031"	#4 - 350	6-5/8"	4-7/8"	2-13/16"	----	25	IHL40T

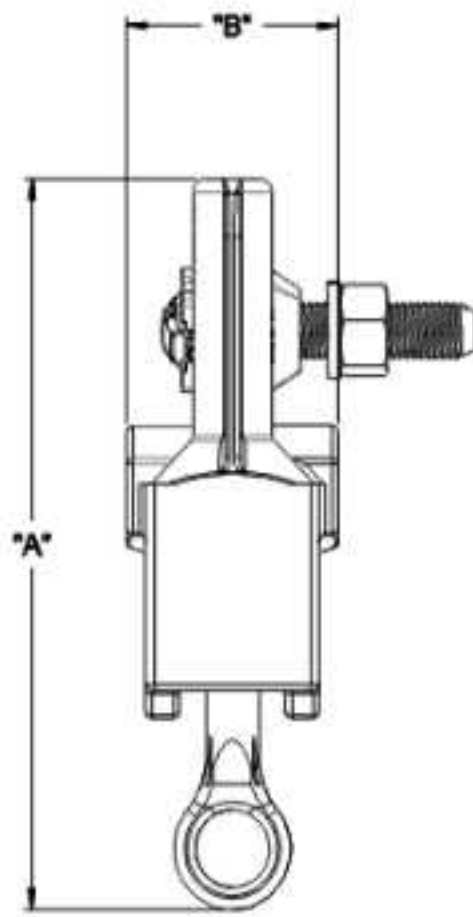
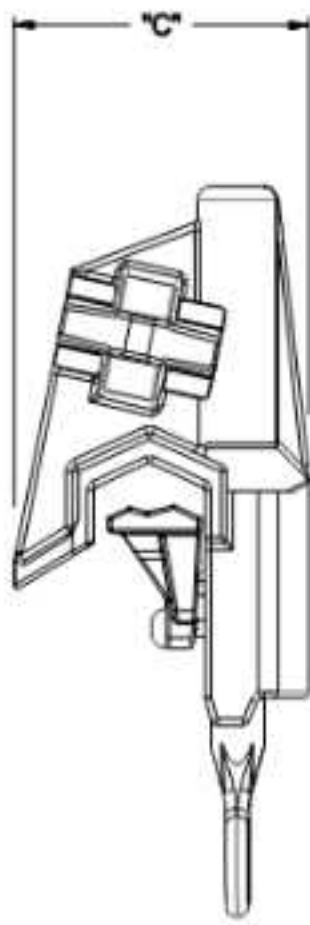
 Body & Keeper - Bronze Alloys  
 Eye Bolts - Bronze Alloy  
 Eye Stem - SS 304



## Aluminum Hot line Clamps

### Application

Hot Line Clamps are designed for installing or removing distribution tap connections with standard hot line tools and equipment



### Key Features

- » Tested per ANSI C119.4
- » Extended jaw for greater conductor contact.
- Aluminum alloy castings offer high strength and corrosion resistance.

Description	Conductor Range		Dimensions Information			Weight/Case	Per Box	Part No.
	Main	Tap	A	B	C			
Aluminum Hot Line Clamp #8-2/0	#8 Solid - 2/0 Stranded .125" - .414"	#8 Solid - 2/0 Stranded .125" - .414"	4-5/16"	1-1/4"	2-1/2"	----	25	IHLA20
Aluminum Hot Line Clamp #6-400MCM	#6 Solid - 397.5 .162" - .745"	#6 Solid - 3/0 Stranded .162" - .547"	6-3/16"	1-3/4"	2-1/2"	----	25	IHLA30
Aluminum Hot Line Clamp #6-400MCM - Heavy Hex Nut	#6 Solid - 397.5 .162" - .745"	#6 Solid - 3/0 Stranded .162" - .547"	6-3/16"	1-3/4"	2-1/2"	----	25	IHLA40
Aluminum Hot Line Clamp 4/0-800	#4/0 - 800 MCM .502" - 1.031"	#8 Solid - 2/0 Stranded .198" - .703"	6-5/8"	2"	2-13/16"	----	25	IHLA60




Body & Keeper - Aluminum  
Eye Bolts - Bronze Alloy  
Eye Stem - SS 304

## KUL Clamp

### Application:

- 1/4" - 7/16" strand
- #8 - #2/0 copper wire

Product Data & Conductor Size			
Description	Weight/Case	Per Box	Part No.
100% tin plated	----	100	IKUL
Tin plated with one bare bronze groove	----	100	IKULT

 Body - Copper Alloy  
Bolts - Half-inch hex head silicon bronze bolt

 Tightening torque 12 Nm

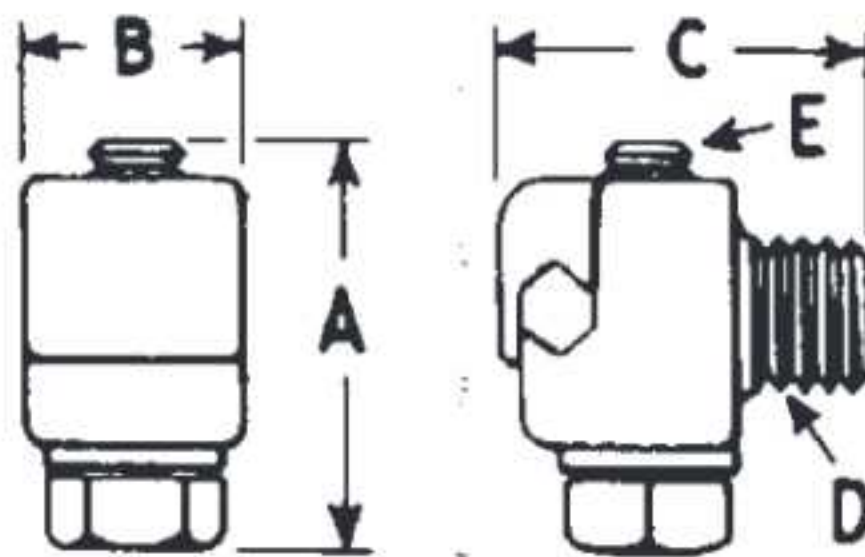


## Vise Type Clamps

### Vise Type Ground Clamp (Lightning Arrester)

### Application

For grounding applications conductor to conductor or mounting plate to conductor. Provided with standard 1/2-13 thread studs and flat surfaces for easy one wrench installation.



CONDUCTOR RANGE	APPROX. DIMENSIONS INCHES (MM)					Weight LB (KG)	Per Box	Part No.
	A	B	C	D	E			
6 Sol. To 1/0 Str.	1-1/4 (31.81)	3/4 (19.09)	1-7/8 (47.72)	1/2 (12.73)	5/16 (7.95)	.21 (.10)	—	IVC207
4 Str. To 2/0 Str.	1-5/16 (33.40)	13/16 (20.68)	1-7/8 (47.72)	1/2 (12.73)	5/16 (7.95)	.29 (.13)	—	IVC208
3 Sol. To 4/0 Str.	1-1/2 (38.18)	1-1/8 (28.63)	1-3/4 (44.54)	1/2 (12.73)	5/16 (7.95)	.40 (.18)	—	IVC209

 Body - Copper Alloy  
Bolts - Stainless Steel  
Suffix "TP" is tin plated

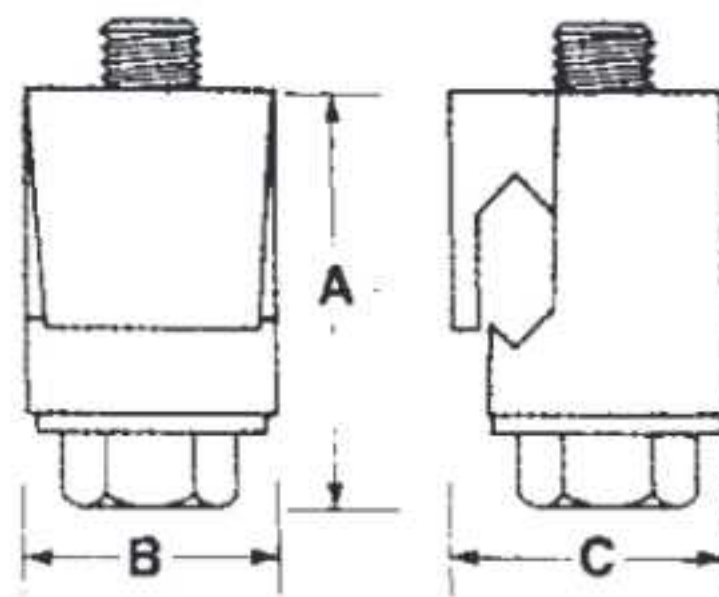
## Telecom & Ground Connectors

### Application

Use for copper connections-Splice, Loop deadend or service entrance tap or grounding connections

One piece for easier,design faster installation

Bolt head design for use with standard ratchet wrench



Front  
VIEW

SIDE  
VIEW



Product Data & Conductor Size									
CONDUCTOR RANGE		DIA. RANGE (2 COND. COMBO.)	A (MM)	B (MM)	C (MM)	BOLT HEAD (HEX.)	Weight EA. LB (KG)	Per Box	Part No.
MAX. 2 CONDUCTORS	MIN. 2 CONDUCTORS	DIA. EA. COND. MIN. - MAX.							
#8 STR.	#11 SOL.	.091"-.146" (2.32-3.72)	7/8" (22.7)	5/8" (15.91)	5/8" (15.91)	3/8" (10)	.06 (.03)	—	VC8
#6 SOL.	#10 SOL.	.101"-.162" (2.57-4.12)	1" (25.45)		3/4" (19.09)		.09 (.04)	—	VC6
#4 STR.	#8 SOL.	.128"-.232" (3.26-5.9)	1-1/4" (31.81)	3/4" (19.09)	7/8" (22.27)	9/16" (14)	.16 (.07)	—	VC4
#2 SOL.	#6 SOL.	.162"-.286" (4.12-7.28)	1-3/8" (34.99)		1" (25.45)		.18 (.08)	—	VC2
#2 STR.	#5 SOL.	.181"-.320" (4.61-8.14)	1-5/8" (41.36)	1-7/8" (47.72)	1-1/8" (28.63)		.28 (.13)	—	VC2A
1/0 STR.	#4 SOL.	.204"-.390" (5.19-9.93)	2" (50.90)		1-1/4" (31.81)		.28 (.13)	—	VC1/0
2/0 STR.	#3 SOL.	.229"-.438" (5.83-11.15)	2" (50.90)	7/8" (22.27)	1-1/4" (31.81)	.48 (.22)	—	VC2/0	
4/0 STR.	#1 SOL.	.289"-.552" (7.36-14.05)	2-1/8" (54.08)	1" (25.45)	1-3/8" (34.99)	.48 (.22)	—	VC4/0	



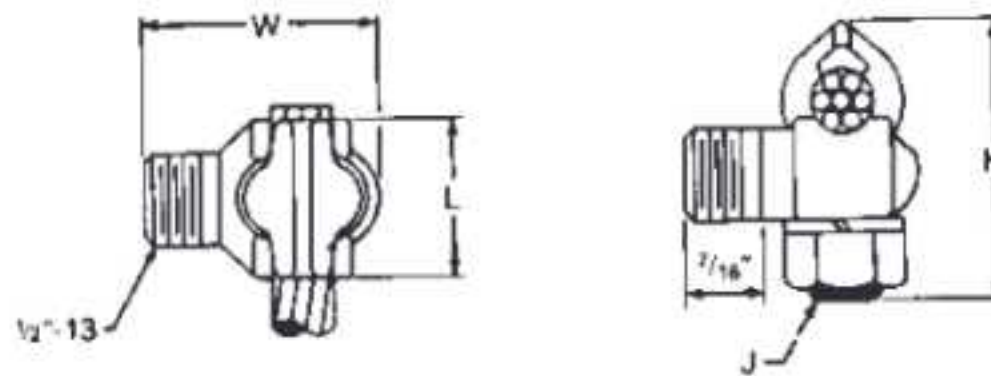
Body - Copper Alloy  
Bolts - Stainless Steel or Silicon Bronze Alloy

Suffix "TP" is tin plated

## Transformer Tank Type GTCL: 90°

### Application

Bronze alloy ground clamp for tapping copper conductor to transformer tank  
Tapered threads at base of stud ensure positive locking and electrical contact without lockwashers



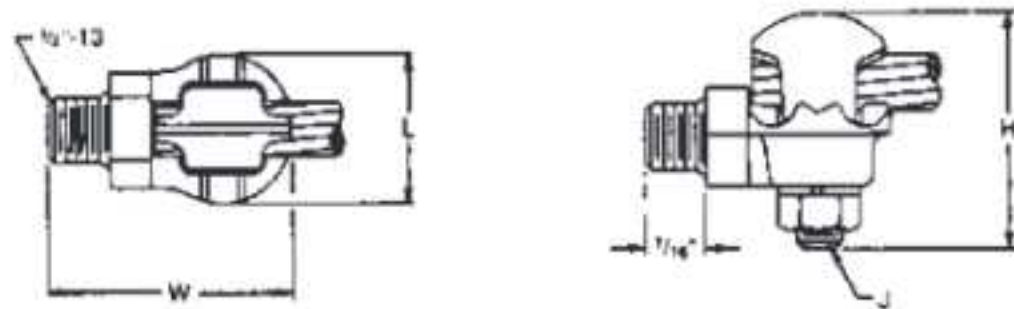
COPPER CABLE RANGE	APPROX. DIMENSIONS INCHES (MM)				APPROX. WT. EACH LBS. (KG)	Per Box	Part No.
	L	H	W	J			
#10 Sol. – #1 Str.	7/8 (22.22)	1-1/2 (38.1)	1-3/8 (34.92)	3/8 (9.52)	.20 (.09)	—	ITCL10
#8 Sol. – 2/0 Str.	1 (25.4)	1-7/8 (47.62)	1-17/32 (38.89)	3/8 (9.52)	.25 (.11)	—	ITCL8



Body - Copper & Bronze Alloy  
Bolts - Stainless Steel

Suffix "TP" is tin plated

## Ground Clamp Straight Ground Mount (Tank Type GTCS : 90°)



COPPER CABLE RANGE	APPROX. DIMENSIONS INCHES (MM)				APPROX. WT. EACH LBS. (KG)	Per Box	Part No.
	L	H	W	J			
#10 Sol. – #1 Str.	1-1/8 (28.58)	1-5/8 (41.28)	1-7/8 (47.62)	3/8 (9.52)	0.29 (0.13)	—	ITCS10
#8 Sol. – 2/0 Str.	1-1/4 (31.75)	1-7/8 (47.62)	2-1/4 (57.27)	3/8 (9.52)	0.34 (0.15)	—	ITCS8
#6 Sol.—250 MCM	1-5/8 (41.28)	2-3/8 (60.32)	2-1/2 (63.5)	1/2 (12.7)	0.45 (0.20)	—	ITCS6



Body - Copper & Bronze Alloy  
Bolts - Stainless Steel

Suffix "TP" is tin plated

## TYPE - LAT (Lighting Arrester)

### Application

This versatile bronze connector can be mounted to a drilled plate, structure or bar using a 3/8"-16 cap screw. It can also be screwed onto a 3/8"-16 bushing stud and secured in place with the included am nut. The eyebolt can be positioned within the body to allow either vertical or horizontal conductor entrances.

STUD SIZE	CONDUCTOR RANGE O.D.	APPROX. WT. EACH LBS. (KG)	Per Box	Part No.
3/8" - 16	8 Sol. - 2/0 Str. .12" - 42" O.D.	40 (18)	—	ILAT20



Body - Copper Alloy  
Bolts - SS - 304

Suffix "TP" is tin plated



## TYPE - LAT (Arrester Terminals)

### Application

This connector is intended primarily for bottom termination of lightning arresters to ground. May also be employed on top connections

STUD SIZE	CONDUCTOR RANGE O.D.	APPROX. WT. EACH LBS. (KG)	Per Box	Part No.
3/8" - 16	#6 Sol. - 1/0 Str. .162" - .373" (4.1 - 9.5) mm	22 (9.9)	—	IGC207LA



Body - Copper Alloy  
Bolts - SS - 304

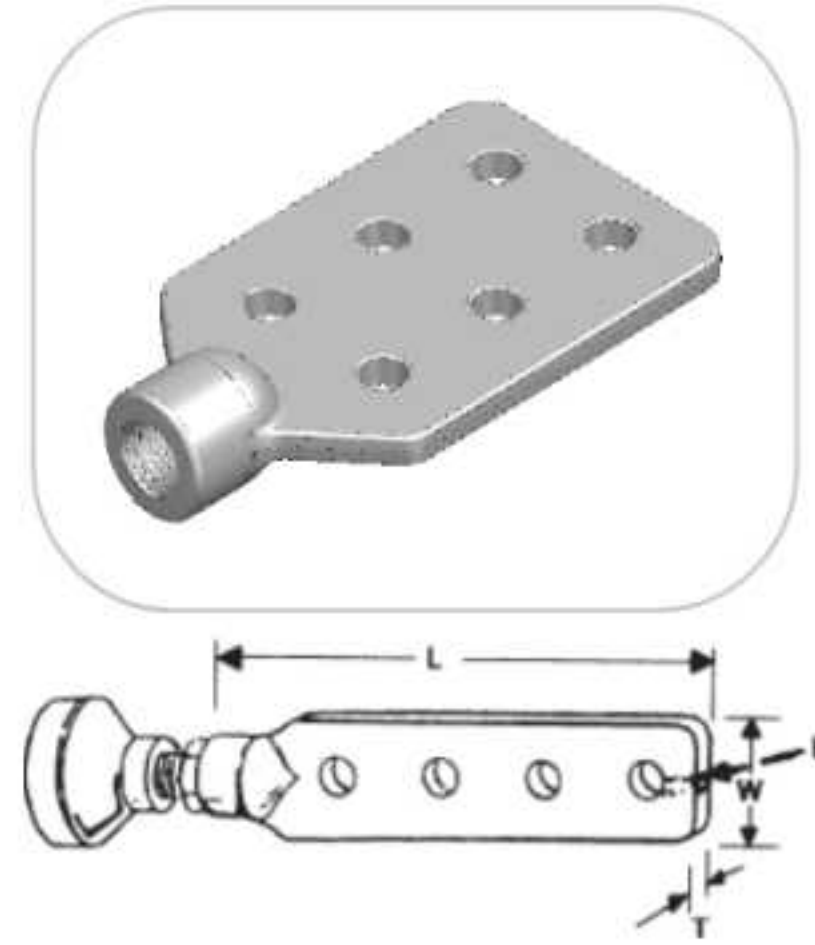


## Spade Terminals

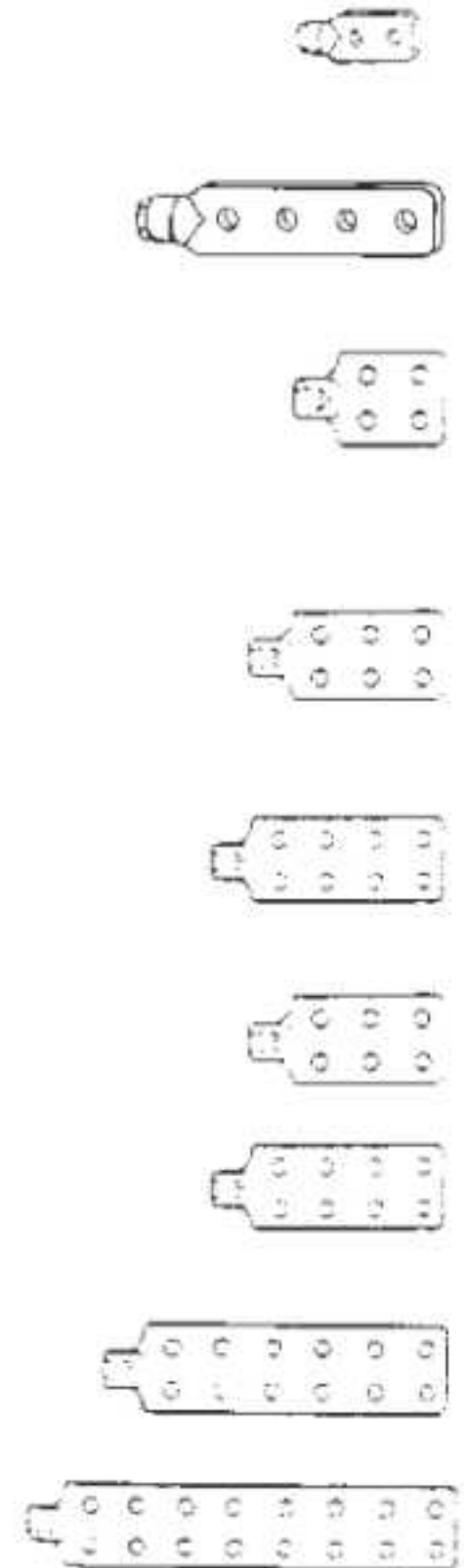
### Application

Secured by jam nut to bushing stud.

- Recommended when copper terminals are connected (Use "AXS" style for aluminum terminals.)
- Terminal lug mounting holes are 9/16" diameter with 1-3/4" NEMA spacing. Jam nuts are usually supplied by the transformer manufacturer and are not furnished unless specified.



X'FORMER STUD SIZE	DIMENSIONS INCHES (MM)			APPROX. WT. 100 LBS. (KG)	Per Box	Part No.
	LENGTH	WIDTH	HEIGHT			
5/8"-11	5.12 (130)	1.37 (35)	0.31 (8)	70 (32)	—	ITS01
1"-14	5.06 (129)	1.93 (49)	0.34 (9)	142 (64)	—	ITS02
5/8"-11	8.50 (216)	1.37 (35)	0.31 (8)	120 (54)	—	ITS03
1"-14	8.56 (218)	1.93 (49)	0.34 (9)	215 (98)	—	ITS04
5/8"-11	8.50 (216)	1.37 (35)	0.31 (8)	36 (16)	—	ITS05
1"-14	8.56 (218)	2.00 (50)	0.34 (9)	65 (29)	—	ITS06
5/8"-11	5.37 (136)	3.50 (89)	0.25 (6)	132 (60)	—	ITS07
1"-14	5.87 (149)	3.50 (89)	0.37 (9)	260 (118)	—	ITS08
5/8"-11	5.37 (136)	3.50 (89)	0.25 (6)	39 (18)	—	ITS09
5/8"-11	6.62 (168)	3.50 (89)	0.37 (9)	256 (116)	—	ITS10
1"-14	7.00 (178)	3.50 (89)	0.37 (9)	315 (143)	—	ITS11
1"-14	7.00 (178)	3.50 (89)	0.37 (9)	94 (43)	—	ITS12
5/8"-11	8.37 (213)	3.50 (89)	0.37 (9)	330 (150)	—	ITS13
1"-14	8.75 (222)	3.50 (89)	0.37 (9)	362 (164)	—	ITS14
1-1/4"-12	7.12 (181)	3.50 (89)	0.37 (9)	345 (156)	—	ITS15
1-1/4"-12	9.12 (232)	3.50 (89)	0.37 (9)	445 (202)	—	ITS16
1-1/4"-12	14.00 (356)	4.00 (102)	0.50 (13)	970 (440)	—	ITS17
1-1/4"-12	17.50 (445)	4.00 (102)	0.50 (13)	1300 (590)	—	ITS18



Body - Bronze Alloy & Aluminum  
Add Suffix "T" for Tin Plating

Add Suffix "A" for Aluminum  
Add Suffix "B" for Bronze

## Beam Clamps- Ductile Iron (Zn plated/HDG)

### Application

Used to attach electrical hardware to steel structures

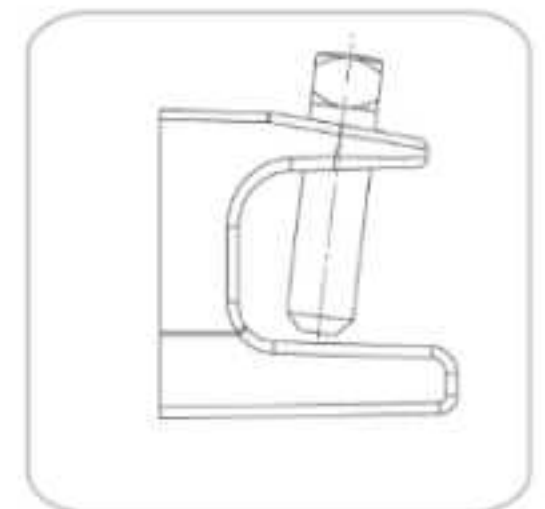
Assembled with square head bolt

Cast from high strength iron/ductile iron and zinc plated/ Hot Dip galvanized

Part Number	Jaw opening	Beam Thickness	Threaded Hole	Bolt Size	Maximum * Load rating
IB1S	13/16"	1/8"- 1/2"	1/4-20 UNC	5/16-18 UNC	300 lbs
IB1AS	13/16"	1/8"- 1/2"	10-24 UNC	5/16-18 UNC	300 lbs
IB1BS	13/16"	1/8"- 1/2"	3/8-16 UNC	5/16-18 UNC	300 lbs
IB1	13/16"	1/8"- 1/2"	1/4-20 UNC	5/16-18 UNC	300 lbs
IB 2	7/8"	1/8"- 1/2"	5/16-18 UNC	3/8-16 UNC	360 lbs
IB 3	1-1/8"	1/4"- 1/2"	3/8-16 UNC	1/2-13 UNC	450 lbs
IB 4	31/32"	1/2"- 3/4"	1/2-13 UNC	5/8-11 UNC	600 lbs
BIB3	7/8"	1/4"- 1/2"	3/8-16 UNC	3/8-16 UNC	360 lbs
BIB4	1-3/16"	1/2"- 3/4"	3/8-16 UNC	3/8-16 UNC	600 lbs



IB Type



\*- UL load rating is 1/3 of maximum static load



Body -Ductile iron  
Bolts - Zinc plated steel

### Standards:

UL 2239

CSA 22.2 No. 18

### Certifications:

" This is Under  
cULus testing  
and it will  
complete soon"

## Clamp Back - Ductile Iron (Zn Plated/HDG )

### Application

Provide space between conduit and mounting surface  
Used with one-hole straps to support rigid conduit or IMC

Cast from high strength ductile iron and zinc plated/ Hot Dip galvanized

Part Number	Trade Size
ICB050	1/2"
ICB075	3/4"
ICB100	1"
ICB125	1-1/4"
ICB150	1-1/2"
ICB200	2"
ICB250	2-1/2"
ICB350	3"
ICB400	3-1/2"
ICB400	4"

### Standards:

UL 2239  
CSA 22.2 No. 18

### Certifications:

**" This is Under  
cULus testing  
and it will  
complete soon"**



Clamp back -Ductile iron

## One Hole Straps - Ductile Iron (Zn Plated/HDG )

### Application

Used to support rigid conduit or IMC to mounting surface  
Can be used with clamp backs

2-1/2" through 4" trade sizes are also use with EMT

Cast from high strength ductile iron and zinc plated/Hot dip galvanized

Part Number	Trade Size
IS 050	1/2"
IS 075	3/4"
IS 100	1"
IS 125	1-1/4"
IS 150	1-1/2"
IS 200	2"
IS 250	2-1/2"
IS 300	3"
IS 350	3-1/2"
IS 400	4"

### Standards:

UL 2239  
CSA 22.2 No. 18

### Certifications:

**" This is Under  
cULus testing  
and it will  
complete soon"**



Straps -Ductile iron



## Nonmetallic- Sheathed cable connectors

### Application

Used to terminate NM sheathed cable, flexible cord or SE cable to outlet boxes and enclosures in dry locations

Assembled with die-cast locknut and zinc plated steel screws

Die-cast from high strength zinc alloy

Part Number	Trade Size (Knockout)	NM & SE Cable Sizes (Range)
IR-1	1/2"	14/2, 12/2 or flex cord 0.300 to 0.560 inches diameter
IR-2	3/4"	14/3, 6/3 or SE Round cable 0.660 to 0.800 inches diameter
IR-3	1"	12/3, 4/3 or SE Round cable 0.660 to 0.970 inches diameter
IR-4	1-1/4"	4/3, 2/3 or SE Round cable 0.660 to 1.132 inches diameter
IR-5	1/2"	Service Entrance Oval cable 0.660 to 1.132 inches diameter
IR-6	2"	Service Entrance Oval cable 1.342 to 1.598 inches diameter

Note: Remaining Sizes of NM and Service Entrance cables under cULus testing and it will complete soon.



### Standards:

UL 514B

CSA 22.2 No. 18-3.12

### Certifications:



Body -Zinc Die Cast  
Bolts - Zinc plated steel

## Weatherproof Boxes



### Application

Weatherproof Aluminum Die casting Enclosers are used for indoor & outdoor application for Home & Industry. These enclosers are used for housing and Industrial electrical connections and components, providing a secure enclosure to prevent electrical hazards. Designed to safeguard measurement instruments, sensors, and controllers in outdoor environments. Ideal for outdoor control applications, protecting sensitive electronic systems from the elements. These enclosers are use providing reliable protection for sensitive equipment and electronics.

MATERIAL	SURFACE FINISH	PROCESS	CHILD PARTS
Aluminium Alloy	Powder Coating / Chrome	Die Castings	Hardware, Gaskets & Wire

## Green Ground Screw

### Application

#10-32 screws  
Compatible with hex, Phillips and slotted  
Green zinc plated

Size	Weight/ Case	Per Box	Part No.
10/32" x 3/8"	1	100	IGG10



Bolts - Zinc Plated Steel



## Green Ground Clip

### Application

The Steel Grounding Clips are designed for bonding pigtails to grounded metal junction boxes.

Size	Weight/ Case	Per Box	Part No.
#14 & #12	3	100	IGG14



Bolts - Zinc Plated Steel



## HEX BOLT

Size	1/4" , 5/16" , 3/8" , 1/2" , 5/8" , 3/4"
Alloy Range	C65100 , Lead Free Brass & Copper Alloys
Plating	Zinc , Nickel , Copper & Tin
Standard	UNC, UNF, UN, UNEF, MM , BSW , BSF
Packing	As per customer requirements



## NUT

Size	1/4" , 5/16" , 3/8" , 1/2" , 5/8" , 3/4"
Alloy Range	C65100 , Lead Free Brass & Copper Alloys
Plating	Zinc , Nickel , Copper & Tin
Standard	UNC, UNF, UN, UNEF, MM , BSW , BSF
Packing	As per customer requirements



## MACHINE SCREW

Size	1/4" , 5/16" , 3/8" , 7/16"
Alloy Range	C65100 , Lead Free Brass & Copper Alloys
Plating	Zinc , Nickel , Copper & Tin
Standard	UNC , UNF , MM , BSW , BSF
Packing	As per customer requirements



## NAIL

Size	1.83 , 2.0 , 2.5 , 2.71 , 3.14 , 3.25 , 3.4
Alloy Range	C65100 , Lead Free Brass & Copper Alloys
Plating	Zinc , Nickel , Copper & Tin
Standard	Cross Hatch Head , Rose Head
Packing	As per customer requirements



## WOOD SCREW

Size	4 , 6 , 8 , 10 , 12
Alloy Range	C65100 , Lead Free Brass & Copper Alloys
Plating	Zinc , Nickel , Copper & Tin
Standard	Slotted & Square Flat, Slotted & square Round
Packing	As per customer requirements



## WASHER

Size	1/4" , 5/16" , 3/8" , 1/2" , 5/8" , 3/4"
Alloy Range	C65100 , Lead Free Brass & Copper Alloys
Plating	Zinc , Nickel , Copper & Tin
Standard	As per International Standard
Packing	As per customer requirements



## SPRING WASHER

Size	1/4" , 5/16" , 3/8" , 1/2" , 5/8" , 3/4"
Alloy Range	C65100 , Lead Free Brass & Copper Alloys
Plating	Zinc , Nickel , Copper & Tin
Standard	As per International Standard
Packing	As per customer requirements



## THREADED STUD

Size	5/16" , 3/8" , 1/2" , 5/8" , 3/4"
Alloy Range	C65100 , Lead Free Brass & Copper Alloys
Plating	Zinc , Nickel , Copper & Tin
Standard	As per Customer Drawing
Packing	As per customer requirements



## U-BOLT

Size	DIA : 4 - 16 MM Length : 500 MM
Alloy Range	C65100 , Lead Free Brass & Copper Alloys
Plating	Zinc , Nickel , Copper & Tin
Standard	As per Customer Drawing
Packing	As per customer requirements





## INDIAN METALS SOLUTIONS PRIVATE LIMITED

### Regd. Office & Factory:

Indian Metals Solutions Pvt Ltd., Sr. No.-115,  
Paddhari Bypass, Nr. Essar Petrol Pump,  
Moviya, Rajkot Gujarat, 360110, India

✉ [gaurav@indianmetal.solutions](mailto:gaurav@indianmetal.solutions)

### Works Office:

North 804, Twinstar, 150 Feet Ring Road,  
Near Balaji, Hall, Rajkot 360002  
[Gujarat], INDIA. +91 96899 49774

✉ [dj@indianmetal.solutions](mailto:dj@indianmetal.solutions)

### Works Office (US):

Indian Metal Solutions,  
26600 Heyn Dr, Novi, MI 48374  
+1 (812) 447-5679

✉ [bill@indianmetal.solutions](mailto:bill@indianmetal.solutions)

